

## Product datasheet for **TA378137**

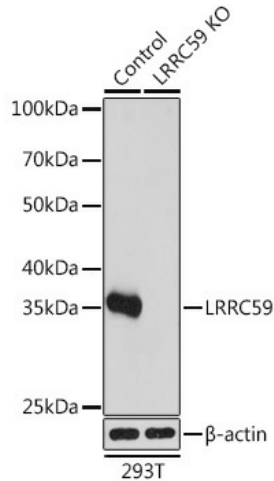
### **LRRC59 Rabbit Polyclonal Antibody**

#### **Product data:**

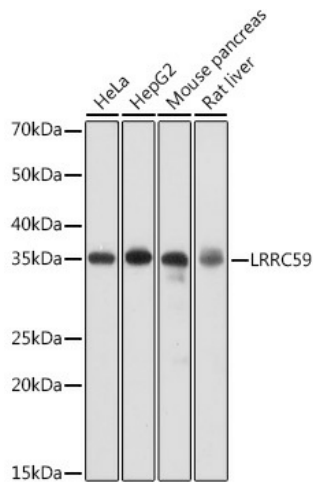
|                                |  |
|--------------------------------|--|
| <b>Product Type:</b>           | Primary Antibodies   |
| <b>Applications:</b>           | IHC, IP, WB  |
| <b>Recommended Dilution:</b>   | WB,1:500 - 1:2000<br>IHC,1:50 - 1:200<br>IP,1:50 - 1:100   |
| <b>Reactivity:</b>             | Human, Mouse, Rat  |
| <b>Host:</b>                   | Rabbit   |
| <b>Isotype:</b>                | IgG  |
| <b>Clonality:</b>              | Polyclonal   |
| <b>Immunogen:</b>              | Recombinant fusion protein containing a sequence corresponding to amino acids 1-244 of human LRRC59 (NP_060979.2).   |
| <b>Formulation:</b>            | Buffer: PBS with 0.02% sodium azide,50% glycerol,pH7.3.  |
| <b>Concentration:</b>          | lot specific   |
| <b>Purification:</b>           | Affinity purification  |
| <b>Conjugation:</b>            | Unconjugated   |
| <b>Storage:</b>                | Store at -20°C. Avoid freeze / thaw cycles.  |
| <b>Stability:</b>              | Shelf life: one year from despatch.  |
| <b>Predicted Protein Size:</b> | 34kDa  |
| <b>Gene Name:</b>              | leucine rich repeat containing 59  |
| <b>Database Link:</b>          | <a href="#">Entrez Gene 55379 Human Q96AG4</a>   |
| <b>Background:</b>             | Required for nuclear import of FGF1, but not that of FGF2. Might regulate nuclear import of exogenous FGF1 by facilitating interaction with the nuclear import machinery and by transporting cytosolic FGF1 to, and possibly through, the nuclear pores. |
| <b>Synonyms:</b>               | FLJ21675; PRO1855  |



[View online »](#)

**Product images:**


Western blot analysis of extracts from normal (control) and LRRC59 knockout (KO) 293T cells, using LRRC59 antibody (TA378137) at 1:1000 dilution. | Secondary antibody: HRP Goat Anti-Rabbit IgG (H+L) at 1:10000 dilution. | Lysates/proteins: 25ug per lane. | Blocking buffer: 3% nonfat dry milk in TBST. | Detection: ECL Basic Kit . | Exposure time: 1s.



Western blot analysis of extracts of various cell lines, using LRRC59 antibody (TA378137) at 1:1000 dilution. | Secondary antibody: HRP Goat Anti-Rabbit IgG (H+L) at 1:10000 dilution. | Lysates/proteins: 25ug per lane. | Blocking buffer: 3% nonfat dry milk in TBST. | Detection: ECL Basic Kit . | Exposure time: 1s.