

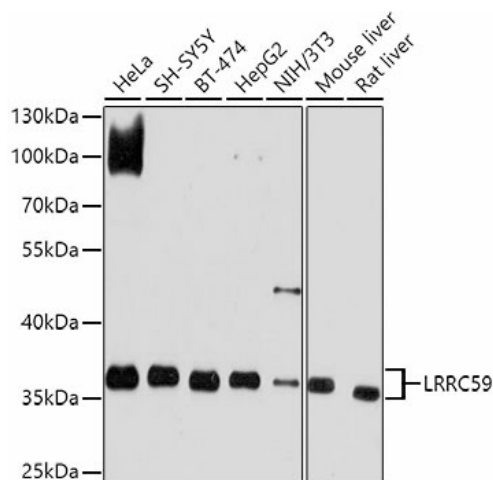
Product datasheet for **TA378136S**

LRRC59 Rabbit Polyclonal Antibody

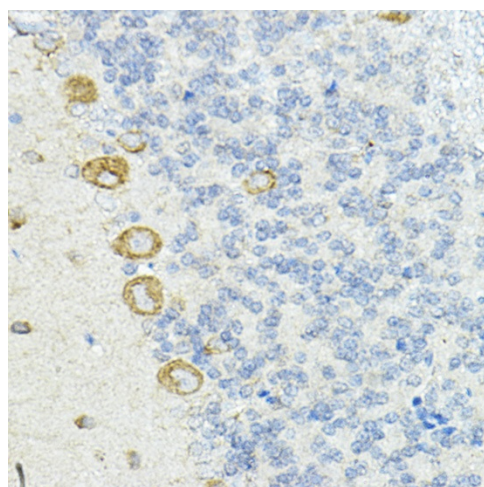
Product data:

Product Type:	Primary Antibodies
Applications:	ELISA, IHC, WB
Recommended Dilution:	WB, 1:500 - 1:1000 IHC-P, 1:50 - 1:200 ELISA, Recommended starting concentration is 1 µg/mL. Please optimize the concentration based on your specific assay requirements.
Reactivity:	Human, Mouse, Rat
Modifications:	Unmodified
Host:	Rabbit
Isotype:	IgG
Clonality:	Polyclonal
Formulation:	Buffer: PBS with 0.02% sodium azide, 50% glycerol, pH 7.3.
Concentration:	lot specific
Purification:	Affinity purification
Conjugation:	Unconjugated
Storage:	Store at -20°C. Avoid freeze / thaw cycles.
Stability:	Shelf life: one year from despatch.
Predicted Protein Size:	35kDa
Gene Name:	leucine rich repeat containing 59
Database Link:	Entrez Gene 55379 Human Q96AG4
Background:	Enables RNA binding activity and cadherin binding activity. Predicted to be involved in positive regulation of Ras protein signal transduction and signal transduction. Located in endoplasmic reticulum and mitochondrial nucleoid.
Synonyms:	FLJ21675; PRO1855

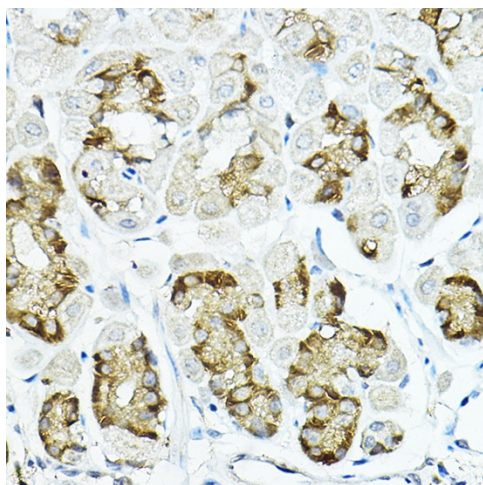

[View online »](#)

Product images:


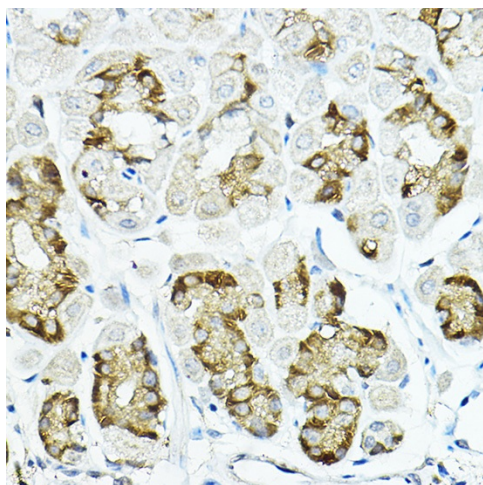
Western blot analysis of lysates from wild type (WT) and LRRC59 knockout (KO) 293T cells



Western blot analysis of lysates from wild type(WT) and LRRC59 knockout (KO) 293T(KO) cells



Immunohistochemistry analysis of paraffin-embedded Rat cerebellum using LRRC59 Rabbit pAb ([TA378136]) at dilution of 1:100 (40x lens). High pressure antigen retrieval performed with 0.01M Citrate Bufferr (pH 6.0) prior to IHC staining.



Immunohistochemistry analysis of paraffin-embedded Human brain using LRRC59 Rabbit pAb ([TA378136]) at dilution of 1:100 (40x lens). High pressure antigen retrieval performed with 0.01M Citrate Bufferr (pH 6.0) prior to IHC staining.