

Product datasheet for **TA378135**

Netrin G1 ligand (LRRC4C) Rabbit Polyclonal Antibody

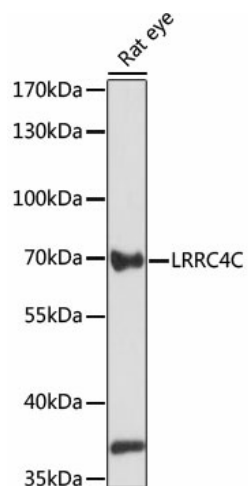
Product data:

Product Type:	Primary Antibodies
Applications:	WB
Recommended Dilution:	WB,1:200 - 1:2000
Reactivity:	Rat
Modifications:	Unmodified
Host:	Rabbit
Isotype:	IgG
Clonality:	Polyclonal
Immunogen:	Recombinant fusion protein containing a sequence corresponding to amino acids 450-520 of human LRRC4C (NP_065980.1).
Formulation:	Buffer: PBS with 0.02% sodium azide,50% glycerol,pH7.3.
Concentration:	lot specific
Purification:	Affinity purification
Conjugation:	Unconjugated
Storage:	Store at -20°C. Avoid freeze / thaw cycles.
Stability:	Shelf life: one year from despatch.
Predicted Protein Size:	71kDa
Gene Name:	leucine rich repeat containing 4C
Database Link:	Q9HCJ2
Background:	NGL1 is a specific binding partner for netrin G1 (NTNG1; MIM 608818), which is a member of the netrin family of axon guidance molecules (Lin et al., 2003 [PubMed 14595443]).
Synonyms:	KIAA1580; NGL-1; NGL1



[View online »](#)

Product images:



Western blot analysis of extracts of rat eye, using LRRC4^C antibody (TA378135) at 1:1000 dilution. | Secondary antibody: HRP Goat Anti-Rabbit IgG (H+L) at 1:10000 dilution. | Lysates/proteins: 25ug per lane. | Blocking buffer: 3% nonfat dry milk in TBST. | Detection: ECL Basic Kit . | Exposure time: 60s.