

Product datasheet for **TA378134S**

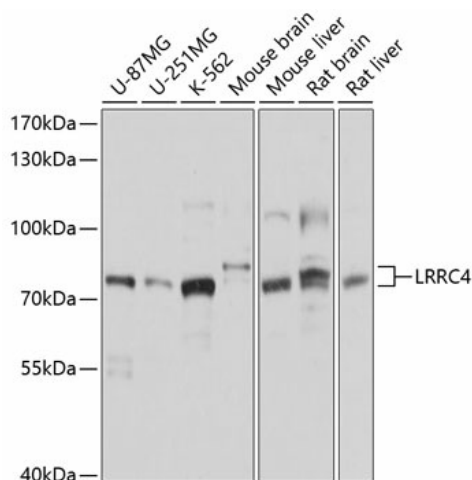
Netrin G2 Ligand (LRRC4) Rabbit Polyclonal Antibody

Product data:

Product Type:	Primary Antibodies
Applications:	ELISA, WB
Recommended Dilution:	WB, 1:1000 - 1:2000 ELISA, Recommended starting concentration is 1 µg/mL. Please optimize the concentration based on your specific assay requirements.
Reactivity:	Human, Mouse, Rat
Modifications:	Unmodified
Host:	Rabbit
Isotype:	IgG
Clonality:	Polyclonal
Formulation:	Buffer: PBS with 0.02% sodium azide, 50% glycerol, pH 7.3.
Concentration:	lot specific
Purification:	Affinity purification
Conjugation:	Unconjugated
Storage:	Store at -20°C. Avoid freeze / thaw cycles.
Stability:	Shelf life: one year from despatch.
Predicted Protein Size:	73kDa
Gene Name:	leucine rich repeat containing 4
Database Link:	Entrez Gene 64101 Human Q9HBW1
Background:	Predicted to be involved in modulation of chemical synaptic transmission and synapse organization. Predicted to act upstream of or within synapse organization. Predicted to be located in neuron spine and postsynaptic membrane. Predicted to be active in Schaffer collateral - CA1 synapse; glutamatergic synapse; and plasma membrane. Predicted to be integral component of postsynaptic density membrane.
Synonyms:	BAG; MGC133342; MGC133343; NAG14



[View online »](#)

Product images:


Western blot analysis of various lysates using LRRC4 Rabbit pAb (TA378134S) at 1:1000 dilution. Secondary antibody: HRP-conjugated Goat anti-Rabbit IgG (H+L) (AS014) at 1:10000 dilution. Lysates/proteins: 25µg per lane. Blocking buffer: 3% nonfat dry milk in TBST. Detection: ECL Basic Kit (RM00020). Exposure time: 1s.