

## Product datasheet for **TA378132**

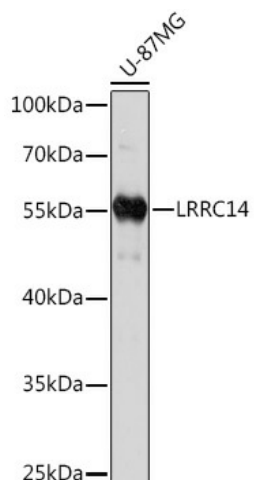
### **LRRC14 Rabbit Polyclonal Antibody**

#### **Product data:**

Product Type:	Primary Antibodies
Applications:	ELISA, WB
Recommended Dilution:	WB, 1:500 - 1:2000 ELISA, Recommended starting concentration is 1 µg/mL. Please optimize the concentration based on your specific assay requirements.
Reactivity:	Human
Host:	Rabbit
Isotype:	IgG
Clonality:	Polyclonal
Formulation:	Buffer: PBS with 0.01% thimerosal, 50% glycerol, pH7.3.
Concentration:	lot specific
Purification:	Affinity purification
Conjugation:	Unconjugated
Storage:	Store at -20°C. Avoid freeze / thaw cycles.
Stability:	Shelf life: one year from despatch.
Predicted Protein Size:	55kDa
Gene Name:	leucine rich repeat containing 14
Database Link:	<a href="#">Entrez Gene 9684 Human</a> <a href="#">Q15048</a>
Background:	This gene encodes a leucine-rich repeat-containing protein. Alternate splicing results in multiple transcript variants.
Synonyms:	KIAA0014; LRRC14A

[View online »](#)

## Product images:



Western blot analysis of lysates from U-87MG cells