

Product datasheet for **TA378128**

ApoER2 (LRP8) Rabbit Polyclonal Antibody

Product data:

Product Type:	Primary Antibodies
Applications:	ICC/IF, IHC, WB
Recommended Dilution:	WB,1:500 - 1:2000 IHC,1:50 - 1:200 IF,1:50 - 1:200
Reactivity:	Human, Rat
Modifications:	Unmodified
Host:	Rabbit
Isotype:	IgG
Clonality:	Polyclonal
Immunogen:	A synthetic peptide corresponding to a sequence within amino acids 900 to the C-terminus of human ApoER2/ApoER2/LRP8 (NP_004622.2).
Formulation:	Buffer: PBS with 0.02% sodium azide,50% glycerol,pH7.3.
Concentration:	lot specific
Purification:	Affinity purification
Conjugation:	Unconjugated
Storage:	Store at -20°C. Avoid freeze / thaw cycles.
Stability:	Shelf life: one year from despatch.
Predicted Protein Size:	77kDa/87kDa/99kDa/105kDa
Gene Name:	LDL receptor related protein 8
Database Link:	Entrez Gene 7804 Human Q14114



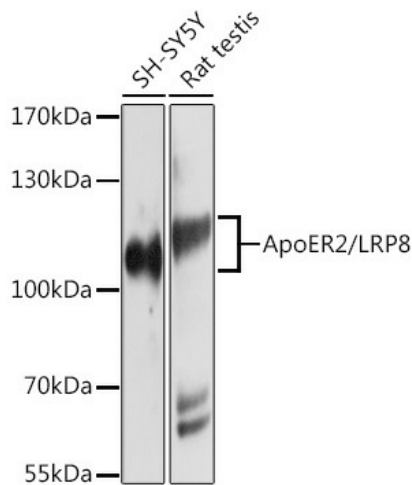
[View online »](#)

Background:

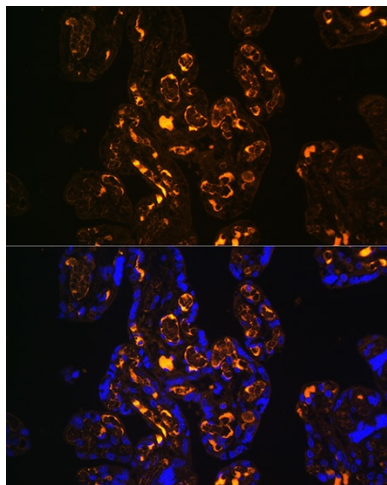
This gene encodes a member of the low density lipoprotein receptor (LDLR) family. Low density lipoprotein receptors are cell surface proteins that play roles in both signal transduction and receptor-mediated endocytosis of specific ligands for lysosomal degradation. The encoded protein plays a critical role in the migration of neurons during development by mediating Reelin signaling, and also functions as a receptor for the cholesterol transport protein apolipoprotein E. Expression of this gene may be a marker for major depressive disorder. Alternatively spliced transcript variants encoding multiple isoforms have been observed for this gene.

Synonyms:

APOER2; HSZ75190; MCI1

Product images:


Western blot analysis of extracts of various cell lines, using ApoER2/ApoER2/LRP8 antibody (TA378128) at 1:1000 dilution. |Secondary antibody: HRP Goat Anti-Rabbit IgG (H+L) at 1:10000 dilution. |Lysates/proteins: 25ug per lane. |Blocking buffer: 3% nonfat dry milk in TBST. |Detection: ECL Basic Kit . |Exposure time: 30s.



Immunofluorescence analysis of Human placenta using ApoER2/ApoER2/LRP8 antibody (TA378128) at dilution of 1:100. Blue: DAPI for nuclear staining.