

## Product datasheet for **TA378117S**

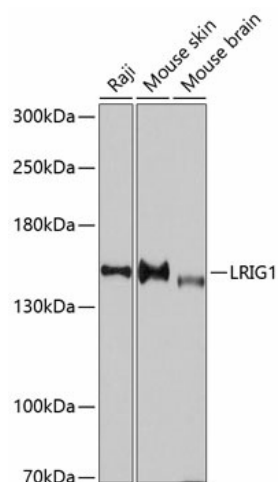
### LRIG1 Rabbit Polyclonal Antibody

#### Product data:

Product Type:	Primary Antibodies
Applications:	ELISA, WB
Recommended Dilution:	WB, 1:1000 - 1:2000 ELISA, Recommended starting concentration is 1 µg/mL. Please optimize the concentration based on your specific assay requirements.
Reactivity:	Human, Mouse
Modifications:	Unmodified
Host:	Rabbit
Isotype:	IgG
Clonality:	Polyclonal
Formulation:	PBS with 0.09% Sodium azide, 50% glycerol, pH 7.3.
Concentration:	lot specific
Purification:	Affinity purification
Conjugation:	Unconjugated
Storage:	Store at -20°C. Avoid freeze / thaw cycles.
Stability:	Shelf life: one year from despatch.
Predicted Protein Size:	119kDa
Gene Name:	leucine-rich repeats and immunoglobulin like domains 1
Database Link:	<a href="#">Entrez Gene 26018 Human Q96JA1</a>
Background:	Predicted to act upstream of or within several processes, including innervation; otolith morphogenesis; and sensory perception of sound. Predicted to be located in plasma membrane. Predicted to be active in extracellular matrix and extracellular space.
Synonyms:	DKFZp586O1624; LIG-1; LIG1



[View online »](#)

**Product images:**

Western blot analysis of various lysates using LRIG1 Rabbit pAb ([TA378117]) at 1:3000 dilution. Secondary antibody: HRP-conjugated Goat anti-Rabbit IgG (H+L) (AS014) at 1:10000 dilution. Lysates/proteins: 25µg per lane. Blocking buffer: 3% nonfat dry milk in TBST. Detection: ECL Enhanced Kit (RM00021). Exposure time: 90s.