

Product datasheet for **TA378115**

LRFN3 Rabbit Polyclonal Antibody

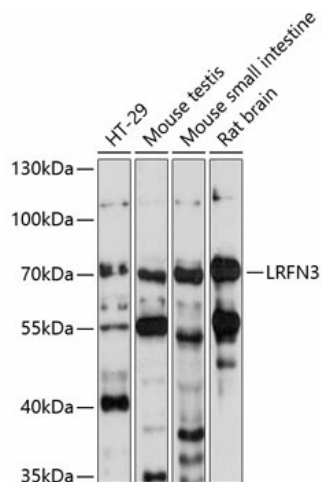
Product data:

Product Type:	Primary Antibodies
Applications:	WB
Recommended Dilution:	WB,1:500 - 1:2000
Reactivity:	Human, Mouse, Rat
Modifications:	Unmodified
Host:	Rabbit
Isotype:	IgG
Clonality:	Polyclonal
Immunogen:	Recombinant fusion protein containing a sequence corresponding to amino acids 380-530 of human LRFN3 (NP_078785.1).
Formulation:	Buffer: PBS with 0.02% sodium azide,50% glycerol,pH7.3.
Concentration:	lot specific
Purification:	Affinity purification
Conjugation:	Unconjugated
Storage:	Store at -20°C. Avoid freeze / thaw cycles.
Stability:	Shelf life: one year from despatch.
Predicted Protein Size:	66kDa
Gene Name:	leucine rich repeat and fibronectin type III domain containing 3
Database Link:	Entrez Gene 79414 Human Q9BTN0
Background:	Cell adhesion molecule that mediates homophilic cell-cell adhesion in a Ca ²⁺ -independent manner. Promotes neurite outgrowth in hippocampal neurons (By similarity).
Synonyms:	FIGLER1; MGC2656; SALM4



[View online »](#)

Product images:



Western blot analysis of extracts of various cell lines, using LRFN3 antibody (TA378115) at 1:1000 dilution. | Secondary antibody: HRP Goat Anti-Rabbit IgG (H+L) at 1:10000 dilution. | Lysates/proteins: 25ug per lane. | Blocking buffer: 3% nonfat dry milk in TBST. | Detection: ECL Basic Kit . | Exposure time: 30s.