

Product datasheet for **TA378110**

Lactoperoxidase (LPO) Rabbit Polyclonal Antibody

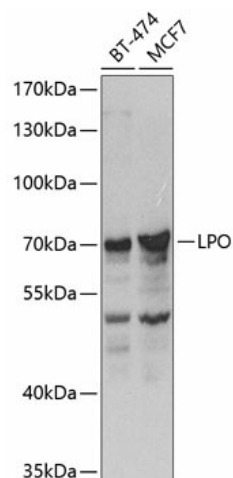
Product data:

Product Type:	Primary Antibodies
Applications:	WB
Recommended Dilution:	WB,1:500 - 1:2000
Reactivity:	Human
Modifications:	Unmodified
Host:	Rabbit
Isotype:	IgG
Clonality:	Polyclonal
Immunogen:	Recombinant fusion protein containing a sequence corresponding to amino acids 27-280 of human LPO (NP_006142.1).
Formulation:	Buffer: PBS with 0.02% sodium azide,50% glycerol,pH7.3.
Concentration:	lot specific
Purification:	Affinity purification
Conjugation:	Unconjugated
Storage:	Store at -20°C. Avoid freeze / thaw cycles.
Stability:	Shelf life: one year from despatch.
Predicted Protein Size:	70kDa/80kDa
Gene Name:	lactoperoxidase
Database Link:	Entrez Gene 4025 Human P22079
Background:	This gene encodes a member of the peroxidase family of proteins. The encoded preproprotein is proteolytically processed to generate the mature enzyme. Following its secretion from salivary, mammary, and other mucosal glands, this enzyme catalyzes the generation of the antimicrobial substance hypothiocyanous acid. This gene is present in a gene cluster on chromosome 17. Alternative splicing results in multiple transcript variants, at least one of which encodes a preproprotein that is proteolytically processed.
Synonyms:	lactoperoxidase; MGC129990; MGC129991; SAPX; SPO



[View online »](#)

Product images:



Western blot analysis of extracts of various cell lines, using LPO antibody (TA378110) at 1:1000 dilution. | Secondary antibody: HRP Goat Anti-Rabbit IgG (H+L) at 1:10000 dilution. | Lysates/proteins: 25ug per lane. | Blocking buffer: 3% nonfat dry milk in TBST. | Detection: ECL Basic Kit . | Exposure time: 90s.