

Product datasheet for **TA378103S**

LPCAT1 Rabbit Polyclonal Antibody

Product data:

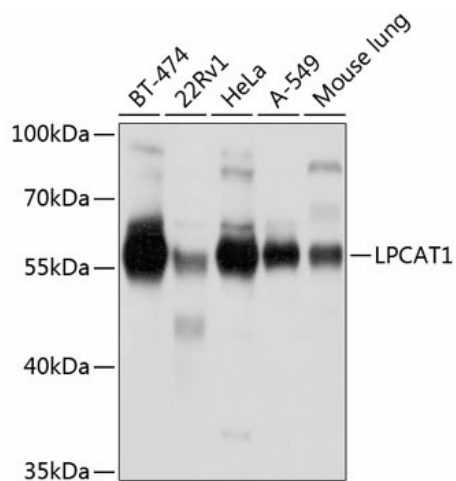
Product Type:	Primary Antibodies
Applications:	ICC/IF, WB
Recommended Dilution:	WB,1:1000 - 1:2000 IHC,1:50 - 1:200
Reactivity:	Human, Mouse, Rat
Modifications:	Unmodified
Host:	Rabbit
Isotype:	IgG
Clonality:	Polyclonal
Immunogen:	Recombinant fusion protein containing a sequence corresponding to amino acids 325-534 of human LPCAT1 (NP_079106.3).
Formulation:	Buffer: PBS with 0.02% sodium azide,50% glycerol,pH7.3.
Concentration:	lot specific
Purification:	Affinity purification
Conjugation:	Unconjugated
Storage:	Store at -20°C. Avoid freeze / thaw cycles.
Stability:	Shelf life: one year from despatch.
Predicted Protein Size:	59kDa
Gene Name:	lysophosphatidylcholine acyltransferase 1
Database Link:	Entrez Gene 79888 Human Q8NF37
Background:	This gene encodes a member of the 1-acyl-sn-glycerol-3-phosphate acyltransferase family of proteins. The encoded enzyme plays a role in phospholipid metabolism, specifically in the conversion of lysophosphatidylcholine to phosphatidylcholine in the presence of acyl-CoA. This process is important in the synthesis of lung surfactant and platelet-activating factor (PAF). Elevated expression of this gene may contribute to the progression of oral squamous cell, prostate, breast, and other human cancers. [provided by RefSeq, Sep 2016]



[View online »](#)

Synonyms: AYTL1; AYTL2; FLJ12443; FLJ41609; lpcat; LPCAT-1; LysoPAFAT; PFAAP3

Product images:



Western blot analysis of extracts of various cell lines, using LPCAT1 antibody ([TA378103]) at 1:1000 dilution. | Secondary antibody: HRP Goat Anti-Rabbit IgG (H+L) at 1:10000 dilution. | Lysates/proteins: 25ug per lane. | Blocking buffer: 3% nonfat dry milk in TBST. | Detection: ECL Basic Kit . | Exposure time: 1s.