

## Product datasheet for **TA378080**

### LMAN2L Rabbit Polyclonal Antibody

#### Product data:

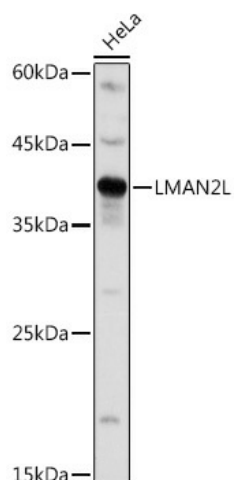
|                       |   |
|-----------------------|---|
| Product Type:         | Primary Antibodies                                      |
| Applications:         | ICC/IF, WB  |
| Recommended Dilution: | WB,1:500 - 1:2000<br>IF,1:50 - 1:200                    |
| Reactivity:           | Human, Mouse, Rat                                       |
| Host:                 | Rabbit  |
| Isotype:              | IgG   |
| Clonality:            | Polyclonal  |
| Immunogen:            | Recombinant protein of human LMAN2L.                    |
| Formulation:          | Buffer: PBS with 0.02% sodium azide,50% glycerol,pH7.3. |
| Concentration:        | lot specific  |
| Purification:         | Affinity purification                                   |
| Conjugation:          | Unconjugated  |
| Storage:              | Store at -20°C. Avoid freeze / thaw cycles.             |
| Stability:            | Shelf life: one year from despatch.                     |
| Gene Name:            | lectin, mannose binding 2 like                          |
| Database Link:        | <a href="#">Entrez Gene 81562 Human Q9H0V9</a>          |

**Background:** This gene encodes a protein belonging to the L-type lectin group of type 1 membrane proteins, which function in the mammalian early secretory pathway. These proteins contain luminal carbohydrate recognition domains, which display homology to leguminous lectins. Unlike other proteins of the group, which cycle in the early secretory pathway and are predominantly associated with post endoplasmic reticulum membranes, the protein encoded by this gene is a non-cycling resident protein of the ER, where it functions as a cargo receptor for glycoproteins. It is proposed to regulate exchange of folded proteins for transport to the Golgi and exchange of misfolded glycoproteins for transport to the ubiquitin-proteasome pathway. [provided by RefSeq, Apr 2016]

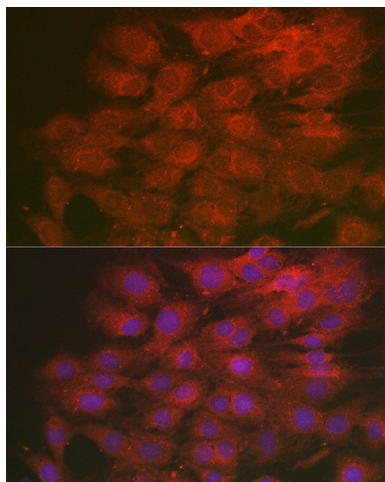
**Synonyms:** DKFZp564L2423; MGC11139; VIP36-like; VIPL



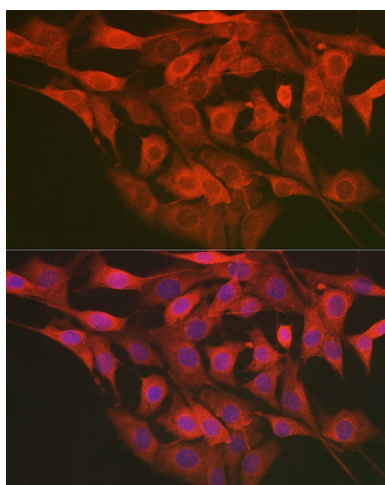
[View online »](#)

**Product images:**

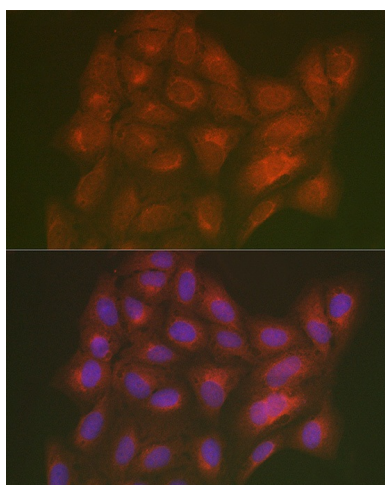
Western blot analysis of extracts of HeLa cells, using LMAN2L antibody (TA378080) at 1:1000 dilution. | Secondary antibody: HRP Goat Anti-Rabbit IgG (H+L) at 1:10000 dilution. | Lysates/proteins: 25ug per lane. | Blocking buffer: 3% nonfat dry milk in TBST. | Detection: ECL Basic Kit . | Exposure time: 3s.



Immunofluorescence analysis of C6 cells using LMAN2L Rabbit pAb (TA378080) at dilution of 1:250 (40x lens). Blue: DAPI for nuclear staining.



Immunofluorescence analysis of NIH/3T3 cells using LMAN2L Rabbit pAb (TA378080) at dilution of 1:250 (40x lens). Blue: DAPI for nuclear staining.



Immunofluorescence analysis of U2OS cells using LMAN2L Rabbit pAb (TA378080) at dilution of 1:250 (40x lens). Blue: DAPI for nuclear staining.