

Product datasheet for **TA378077**

LLPH Rabbit Polyclonal Antibody

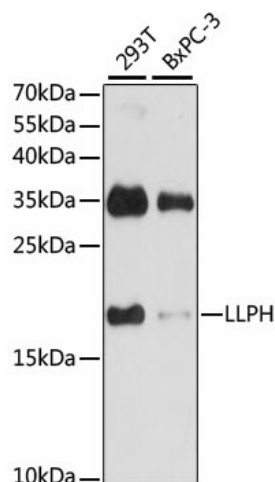
Product data:

Product Type:	Primary Antibodies
Applications:	ICC/IF, WB
Recommended Dilution:	WB,1:200 - 1:2000 IF,1:50 - 1:200
Reactivity:	Human, Rat
Modifications:	Unmodified
Host:	Rabbit
Isotype:	IgG
Clonality:	Polyclonal
Immunogen:	Recombinant fusion protein containing a sequence corresponding to amino acids 1-129 of human LLPH (NP_115714.1).
Formulation:	Buffer: PBS with 0.02% sodium azide,50% glycerol,pH7.3.
Concentration:	lot specific
Purification:	Affinity purification
Conjugation:	Unconjugated
Storage:	Store at -20°C. Avoid freeze / thaw cycles.
Stability:	Shelf life: one year from despatch.
Predicted Protein Size:	15kDa
Gene Name:	LLP homolog, long-term synaptic facilitation
Database Link:	Entrez Gene 84298 Human Q9BRT6
Background:	In hippocampal neurons, regulates dendritic and spine growth and synaptic transmission.
Synonyms:	C12orf31; hLLP; MGC14817; MGC104302

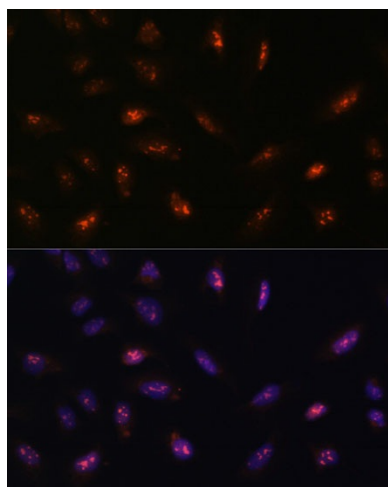


[View online »](#)

Product images:



Western blot analysis of extracts of various cell lines, using LLPH antibody (TA378077) at 1:1000 dilution. | Secondary antibody: HRP Goat Anti-Rabbit IgG (H+L) at 1:10000 dilution. | Lysates/proteins: 25ug per lane. | Blocking buffer: 3% nonfat dry milk in TBST. | Detection: ECL Basic Kit. | Exposure time: 30s.



Immunofluorescence analysis of U-2 OS cells using LLPH antibody (TA378077) at dilution of 1:100. Blue: DAPI for nuclear staining.