

## Product datasheet for **TA378073S**

### Llg12 Rabbit Polyclonal Antibody

#### Product data:

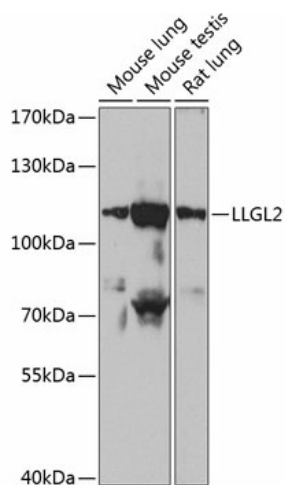
Product Type:	Primary Antibodies
Applications:	ELISA, WB
Recommended Dilution:	WB, 1:500 - 1:2000 ELISA, Recommended starting concentration is 1 µg/mL. Please optimize the concentration based on your specific assay requirements.
Reactivity:	Mouse, Rat
Modifications:	Unmodified
Host:	Rabbit
Isotype:	IgG
Clonality:	Polyclonal
Formulation:	Buffer: PBS with 0.02% sodium azide, 50% glycerol, pH 7.3.
Concentration:	lot specific
Purification:	Affinity purification
Conjugation:	Unconjugated
Storage:	Store at -20°C. Avoid freeze / thaw cycles.
Stability:	Shelf life: one year from despatch.
Predicted Protein Size:	114kDa
Gene Name:	lethal giant larvae homolog 2 (Drosophila)
Database Link:	<a href="#">Entrez Gene 217325 Mouse Q3TJ91</a>
Background:	Predicted to enable GTPase activator activity; PDZ domain binding activity; and myosin II binding activity. Acts upstream of or within establishment or maintenance of polarity of embryonic epithelium; labyrinthine layer development; and post-embryonic development. Predicted to be located in cytosol and intracellular membrane-bounded organelle. Predicted to be active in cortical actin cytoskeleton and plasma membrane. Is expressed in several structures, including cardiovascular system; endocrine gland; genitourinary system; gut; and nasal cavity epithelium. Orthologous to human LLGL2 (LLGL scribble cell polarity complex component 2).



[View online »](#)

Synonyms: HGL; LGL2

## Product images:



Western blot analysis of various lysates using LLGL2 Rabbit pAb ([TA378073]) at 1:1000 dilution. Secondary antibody: HRP-conjugated Goat anti-Rabbit IgG (H+L) (AS014) at 1:10000 dilution. Lysates/proteins: 25µg per lane. Blocking buffer: 3% nonfat dry milk in TBST. Detection: ECL Basic Kit (RM00020). Exposure time: 60s.