

Product datasheet for **TA378072**

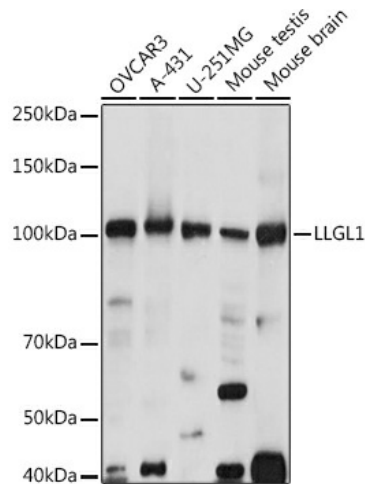
LLGL1 Rabbit Polyclonal Antibody

Product data:

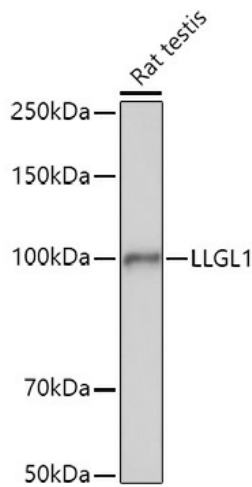
Product Type:	Primary Antibodies
Applications:	ICC/IF, IHC, WB
Recommended Dilution:	WB,1:500 - 1:2000 IHC,1:50 - 1:200 IF,1:50 - 1:200
Reactivity:	Human, Mouse, Rat
Modifications:	Unmodified
Host:	Rabbit
Isotype:	IgG
Clonality:	Polyclonal
Immunogen:	Recombinant fusion protein containing a sequence corresponding to amino acids 945-1064 of human LLGL1 (NP_004131.3).
Formulation:	Buffer: PBS with 0.02% sodium azide,50% glycerol,pH7.3.
Concentration:	lot specific
Purification:	Affinity purification
Conjugation:	Unconjugated
Storage:	Store at -20°C. Avoid freeze / thaw cycles.
Stability:	Shelf life: one year from despatch.
Predicted Protein Size:	112kDa
Gene Name:	LLGL1, scribble cell polarity complex component
Database Link:	Entrez Gene 3996 Human Q15334
Background:	This gene encodes a protein that is similar to a tumor suppressor in Drosophila. The protein is part of a cytoskeletal network and is associated with nonmuscle myosin II heavy chain and a kinase that specifically phosphorylates this protein at serine residues. The gene is located within the Smith-Magenis syndrome region on chromosome 17.
Synonyms:	DLG4; HUGL; HUGL-1; HUGL1; LLGL



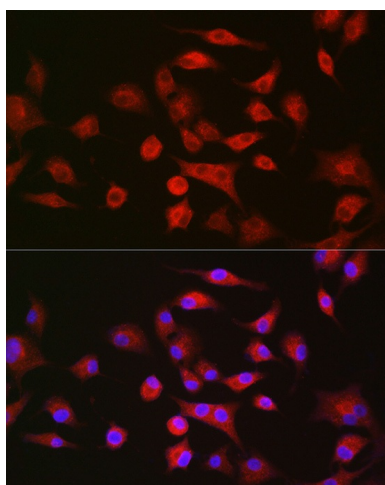
[View online »](#)

Product images:


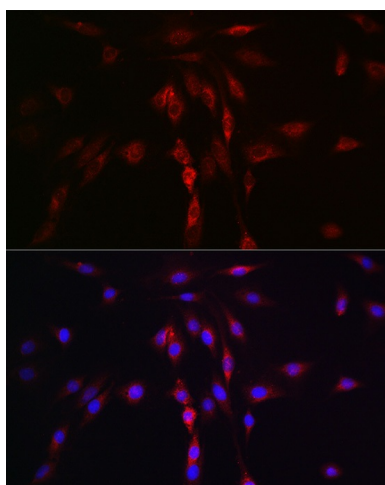
Western blot analysis of extracts of various cell lines, using LLGL1 antibody (TA378072) at 1:1000 dilution. | Secondary antibody: HRP Goat Anti-Rabbit IgG (H+L) at 1:10000 dilution. | Lysates/proteins: 25ug per lane. | Blocking buffer: 3% nonfat dry milk in TBST. | Detection: ECL Basic Kit . | Exposure time: 10s.



Western blot analysis of extracts of Rat testis, using LLGL1 antibody (TA378072) at 1:1000 dilution. | Secondary antibody: HRP Goat Anti-Rabbit IgG (H+L) at 1:10000 dilution. | Lysates/proteins: 25ug per lane. | Blocking buffer: 3% nonfat dry milk in TBST. | Detection: ECL Basic Kit . | Exposure time: 60s.



Immunofluorescence analysis of A-549 cells using LLGL1 antibody (TA378072) at dilution of 1:100. Blue: DAPI for nuclear staining.



Immunofluorescence analysis of C6 cells using LLGL1 antibody (TA378072) at dilution of 1:100. Blue: DAPI for nuclear staining.