

## Product datasheet for **TA378066S**

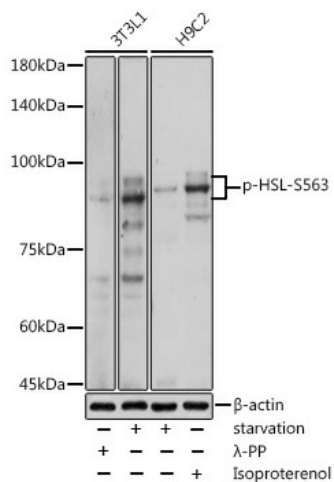
### Hormone sensitive lipase (LIPE) Rabbit Polyclonal Antibody

#### Product data:

Product Type:	Primary Antibodies
Applications:	WB
Recommended Dilution:	WB,1:500 - 1:2000
Reactivity:	Human, Mouse, Rat
Modifications:	Phospho S563
Host:	Rabbit
Isotype:	IgG
Clonality:	Polyclonal
Immunogen:	A phospho specific peptide corresponding to residues surrounding S853 of human HSL (NP_005348.2 ,equivalent to S563 of rat HSL
Formulation:	PBS with 0.05% proclin300,50% glycerol,pH7.3.
Concentration:	lot specific
Purification:	Affinity purification
Conjugation:	Unconjugated
Storage:	Store at -20°C. Avoid freeze / thaw cycles.
Stability:	Shelf life: one year from despatch.
Predicted Protein Size:	84kDa/116kDa
Gene Name:	lipase E, hormone sensitive type
Database Link:	<a href="#">Entrez Gene 3991 Human Q05469</a>
Background:	The protein encoded by this gene has a long and a short form, generated by use of alternative translational start codons. The long form is expressed in steroidogenic tissues such as testis, where it converts cholesteryl esters to free cholesterol for steroid hormone production. The short form is expressed in adipose tissue, among others, where it hydrolyzes stored triglycerides to free fatty acids.
Synonyms:	HSL; LHS



[View online »](#)

**Product images:**


Western blot analysis of extracts of various cell lines, using Phospho-HSL-S563 antibody ([TA378066]) at 1:1000 dilution. 3T3L1 cells were treated by  $\lambda$ -PP mixed solution (1ul) at 30°C for 30 minutes. H9C2 cells were treated with Isoproterenol (10  $\mu$ M for 20 min) at 37°C. | Secondary antibody: HRP Goat Anti-Rabbit IgG (H+L) at 1:10000 dilution. | Lysates/proteins: 25ug per lane. | Blocking buffer: 3% nonfat dry milk in TBST. | Detection: ECL Basic Kit. | Exposure time: 180s.