

Product datasheet for **TA378064S**

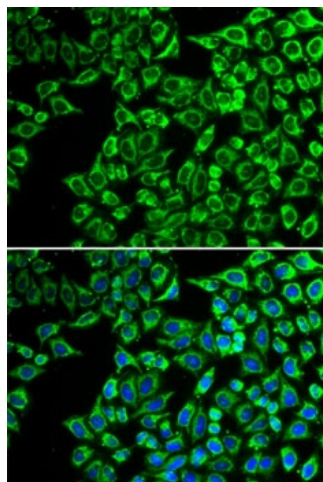
LIPC Rabbit Polyclonal Antibody

Product data:

Product Type:	Primary Antibodies
Applications:	ELISA, ICC/IF, WB
Recommended Dilution:	WB, 1:500 - 1:2000 IF/ICC, 1:50 - 1:200 ELISA, Recommended starting concentration is 1 µg/mL. Please optimize the concentration based on your specific assay requirements.
Reactivity:	Human
Modifications:	Unmodified
Host:	Rabbit
Isotype:	IgG
Clonality:	Polyclonal
Formulation:	Buffer: PBS with 0.02% sodium azide, 50% glycerol, pH 7.3.
Concentration:	lot specific
Purification:	Affinity purification
Conjugation:	Unconjugated
Storage:	Store at -20°C. Avoid freeze / thaw cycles.
Stability:	Shelf life: one year from despatch.
Predicted Protein Size:	56kDa
Gene Name:	lipase C, hepatic type
Database Link:	Entrez Gene 3990 Human P11150
Background:	Enables phospholipase A1 activity and triglyceride lipase activity. Involved in several processes, including lipid homeostasis; plasma lipoprotein particle remodeling; and triglyceride catabolic process. Located in extracellular space. Implicated in several diseases, including Alzheimer's disease; coronary artery disease; familial combined hyperlipidemia; peripheral vascular disease; and type 2 diabetes mellitus. Biomarker of hyperinsulinism; obesity; and type 1 diabetes mellitus.
Synonyms:	HDLQC12; HL; HTGL; LIPH



[View online »](#)

Product images:

Immunofluorescence analysis of A549 cells using LIPC Rabbit pAb ([TA378064]). Secondary antibody: Cy3-conjugated Goat anti-Rabbit IgG (H+L) (AS007) at 1:500 dilution. Blue: DAPI for nuclear staining.