

Product datasheet for **TA378059S**

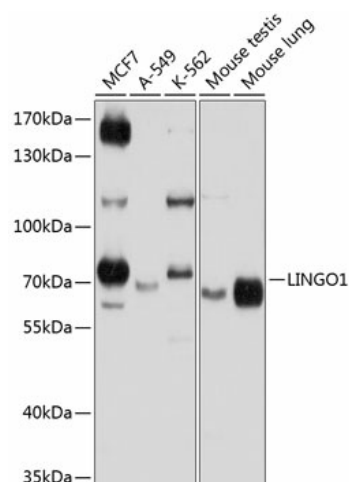
LINGO1 Rabbit Polyclonal Antibody

Product data:

Product Type:	Primary Antibodies
Applications:	ELISA, WB
Recommended Dilution:	WB, 1:500 - 1:2000 ELISA, Recommended starting concentration is 1 µg/mL. Please optimize the concentration based on your specific assay requirements.
Reactivity:	Human, Mouse
Modifications:	Unmodified
Host:	Rabbit
Isotype:	IgG
Clonality:	Polyclonal
Formulation:	Buffer: PBS with 0.02% sodium azide, 50% glycerol, pH 7.3.
Concentration:	lot specific
Purification:	Affinity purification
Conjugation:	Unconjugated
Storage:	Store at -20°C. Avoid freeze / thaw cycles.
Stability:	Shelf life: one year from despatch.
Predicted Protein Size:	70kDa
Gene Name:	leucine rich repeat and Ig domain containing 1
Database Link:	Entrez Gene 84894 Human Q96FE5
Background:	Predicted to enable epidermal growth factor receptor binding activity. Predicted to act upstream of or within generation of neurons and protein kinase B signaling. Predicted to be located in plasma membrane. Predicted to be active in extracellular matrix and extracellular space. Implicated in autosomal recessive non-syndromic intellectual disability and glaucoma.
Synonyms:	FLJ14594; LERN1; LRRN6A; MGC17422; UNQ201



[View online »](#)

Product images:


Western blot analysis of various lysates using LINGO1 Rabbit pAb (TA378059) at 1:1000 dilution.

Secondary antibody: HRP-conjugated Goat anti-Rabbit IgG (H+L) (AS014) at 1:10000 dilution.

Lysates/proteins: 25µg per lane.

Blocking buffer: 3% nonfat dry milk in TBST.

Detection: ECL Basic Kit (RM00020).

Exposure time: 60s.