

Product datasheet for **TA378057S**

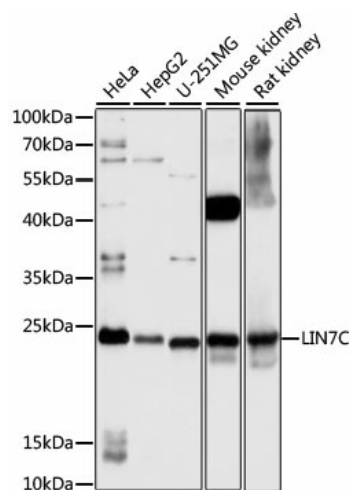
LIN7C Rabbit Polyclonal Antibody

Product data:

Product Type:	Primary Antibodies
Applications:	ELISA, WB
Recommended Dilution:	WB, 1:500 - 1:2000 ELISA, Recommended starting concentration is 1 µg/mL. Please optimize the concentration based on your specific assay requirements.
Reactivity:	Human, Mouse, Rat
Modifications:	Unmodified
Host:	Rabbit
Isotype:	IgG
Clonality:	Polyclonal
Formulation:	Buffer: PBS with 0.02% sodium azide, 50% glycerol, pH 7.3.
Concentration:	lot specific
Purification:	Affinity purification
Conjugation:	Unconjugated
Storage:	Store at -20°C. Avoid freeze / thaw cycles.
Stability:	Shelf life: one year from despatch.
Predicted Protein Size:	22kDa
Gene Name:	lin-7 homolog C, crumbs cell polarity complex component
Database Link:	Entrez Gene 55327 Human Q9NUP9
Background:	Enables L27 domain binding activity and cytoskeletal protein binding activity. Involved in morphogenesis of an epithelial sheet. Located in cell-cell junction; cytoplasm; and plasma membrane. Part of MPP7-DLG1-LIN7 complex.
Synonyms:	FLJ11215; LIN-7-C; LIN-7C; MALS-3; MALS3; VELI3



[View online »](#)

Product images:


Western blot analysis of various lysates using LIN7C Rabbit pAb (TA378057) at 1:1000 dilution.

Secondary antibody: HRP-conjugated Goat anti-Rabbit IgG (H+L) (AS014) at 1:10000 dilution.

Lysates/proteins: 25µg per lane.

Blocking buffer: 3% nonfat dry milk in TBST.

Detection: ECL Basic Kit (RM00020).

Exposure time: 3s.