

Product datasheet for **TA378048**

LIME (LIME1) Rabbit Polyclonal Antibody

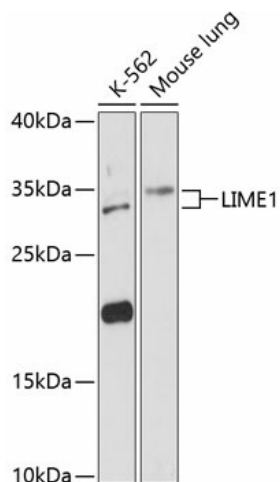
Product data:

Product Type:	Primary Antibodies
Applications:	WB
Recommended Dilution:	WB,1:500 - 1:2000
Reactivity:	Human, Mouse
Modifications:	Unmodified
Host:	Rabbit
Isotype:	IgG
Clonality:	Polyclonal
Immunogen:	Recombinant fusion protein containing a sequence corresponding to amino acids 1-295 of human LIME1 (NP_060276.2).
Formulation:	Buffer: PBS with 0.02% sodium azide,50% glycerol,pH7.3.
Concentration:	lot specific
Purification:	Affinity purification
Conjugation:	Unconjugated
Storage:	Store at -20°C. Avoid freeze / thaw cycles.
Stability:	Shelf life: one year from despatch.
Predicted Protein Size:	20kDa/31kDa
Gene Name:	Lck interacting transmembrane adaptor 1
Database Link:	Entrez Gene 54923 Human Q9H400
Background:	This gene encodes a transmembrane adaptor protein that links the T and B-cell receptor stimulation to downstream signaling pathways via its association with the Src family kinases Lck and Lyn, respectively. Alternative splicing of this gene results in multiple transcript variants.
Synonyms:	dj583P15.4; FLJ20406; LIME; LP8067



[View online »](#)

Product images:



Western blot analysis of extracts of various cell lines, using LIME1 antibody (TA378048) at 1:3000 dilution. | Secondary antibody: HRP Goat Anti-Rabbit IgG (H+L) at 1:10000 dilution. | Lysates/proteins: 25ug per lane. | Blocking buffer: 3% nonfat dry milk in TBST. | Detection: ECL Basic Kit . | Exposure time: 90s.