

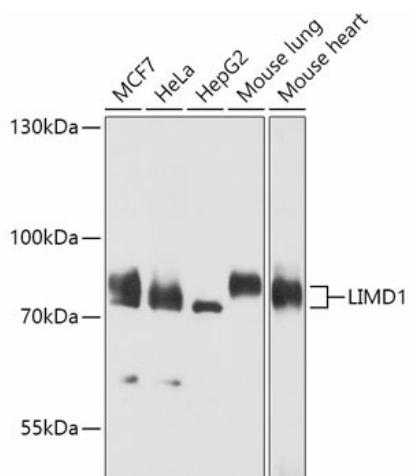
Product datasheet for **TA378047S**

LIMD1 Rabbit Polyclonal Antibody

Product data:

| | |
|-------------------------|---|
| Product Type: | Primary Antibodies |
| Applications: | ELISA, WB |
| Recommended Dilution: | WB, 1:500 - 1:2000 ELISA, Recommended starting concentration is 1 µg/mL. Please optimize the concentration based on your specific assay requirements. |
| Reactivity: | Human, Mouse |
| Modifications: | Unmodified |
| Host: | Rabbit |
| Isotype: | IgG |
| Clonality: | Polyclonal |
| Formulation: | Buffer: PBS with 0.02% sodium azide, 50% glycerol, pH 7.3. |
| Concentration: | lot specific |
| Purification: | Affinity purification |
| Conjugation: | Unconjugated |
| Storage: | Store at -20°C. Avoid freeze / thaw cycles. |
| Stability: | Shelf life: one year from despatch. |
| Predicted Protein Size: | 72kDa |
| Gene Name: | LIM domains containing 1 |
| Database Link: | Entrez Gene 8994 Human Q9UGP4 |
| Background: | Predicted to enable transcription corepressor activity. Involved in several processes, including negative regulation of hippo signaling; regulation of gene expression; and response to hypoxia. Acts upstream of or within P-body assembly and gene silencing by miRNA. Located in several cellular components, including P-body; adherens junction; and focal adhesion. Part of RISC complex. |
| Synonyms: | LIMD1 |

[View online »](#)

Product images:

Western blot analysis of various lysates using LIMD1 Rabbit pAb ([TA378047]) at 1:1000 dilution. Secondary antibody: HRP-conjugated Goat anti-Rabbit IgG (H+L) (AS014) at 1:10000 dilution. Lysates/proteins: 25µg per lane. Blocking buffer: 3% nonfat dry milk in TBST. Detection: ECL Basic Kit (RM00020). Exposure time: 10s.