

Product datasheet for **TA378046S**

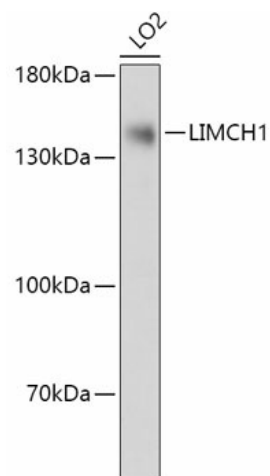
LIMCH1 Rabbit Polyclonal Antibody

Product data:

Product Type:	Primary Antibodies
Applications:	ELISA, WB
Recommended Dilution:	WB, 1:500 - 1:2000 ELISA, Recommended starting concentration is 1 µg/mL. Please optimize the concentration based on your specific assay requirements.
Reactivity:	Human
Modifications:	Unmodified
Host:	Rabbit
Isotype:	IgG
Clonality:	Polyclonal
Formulation:	Buffer: PBS with 0.02% sodium azide, 50% glycerol, pH 7.3.
Concentration:	lot specific
Purification:	Affinity purification
Conjugation:	Unconjugated
Storage:	Store at -20°C. Avoid freeze / thaw cycles.
Stability:	Shelf life: one year from despatch.
Predicted Protein Size:	122kDa
Gene Name:	LIM and calponin homology domains 1
Database Link:	Entrez Gene 22998 Human Q9UPQ0
Background:	Enables myosin II head/neck binding activity. Involved in several processes, including cytoplasmic actin-based contraction involved in cell motility; positive regulation of stress fiber assembly; and regulation of focal adhesion assembly. Located in stress fiber. Colocalizes with myosin II complex.
Synonyms:	DKFZp434I0312; DKFZP686A01247; DKFZp686B2470; DKFZp686G2094; DKFZp686G18243; DKFZp781C1754; DKFZp781I1455; KIAA1102; LIMCH1A; LMO7B; MGC72127


[View online »](#)

Product images:



Western blot analysis of lysates from LO2 cells