

## Product datasheet for **TA378046**

### LIMCH1 Rabbit Polyclonal Antibody

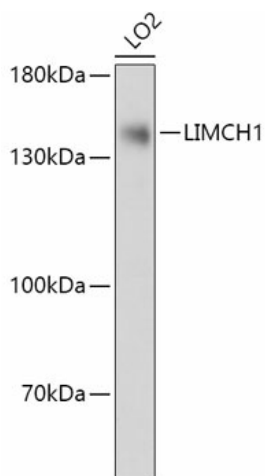
#### Product data:

Product Type:	Primary Antibodies
Applications:	WB
Recommended Dilution:	WB,1:500 - 1:2000
Reactivity:	Human
Modifications:	Unmodified
Host:	Rabbit
Isotype:	IgG
Clonality:	Polyclonal
Immunogen:	Recombinant fusion protein containing a sequence corresponding to amino acids 150-450 of human LIMCH1 (NP_001106189.1).
Formulation:	Buffer: PBS with 0.02% sodium azide,50% glycerol,pH7.3.
Concentration:	lot specific
Purification:	Affinity purification
Conjugation:	Unconjugated
Storage:	Store at -20°C. Avoid freeze / thaw cycles.
Stability:	Shelf life: one year from despatch.
Gene Name:	LIM and calponin homology domains 1
Database Link:	<a href="#">Entrez Gene 22998 Human Q9UPQ0</a>
Background:	Actin stress fibers-associated protein that activates non-muscle myosin IIa. Activates the non-muscle myosin IIa complex by promoting the phosphorylation of its regulatory subunit MRLC/MYL9. Through the activation of non-muscle myosin IIa, positively regulates actin stress fibers assembly and stabilizes focal adhesions. It therefore negatively regulates cell spreading and cell migration.
Synonyms:	DKFZp434I0312; DKFZP686A01247; DKFZp686B2470; DKFZp686G2094; DKFZp686G18243; DKFZp781C1754; DKFZp781I1455; KIAA1102; LIMCH1A; LMO7B; MGC72127



[View online »](#)

## Product images:



Western blot analysis of extracts of LO2 cells, using LIMCH1 antibody (TA378046) at 1:1000 dilution. | Secondary antibody: HRP Goat Anti-Rabbit IgG (H+L) at 1:10000 dilution. | Lysates/proteins: 25ug per lane. | Blocking buffer: 3% nonfat dry milk in TBST. | Detection: ECL Basic Kit . | Exposure time: 10s.