

## Product datasheet for **TA378045**

### **EPLIN (LIMA1) Rabbit Polyclonal Antibody**

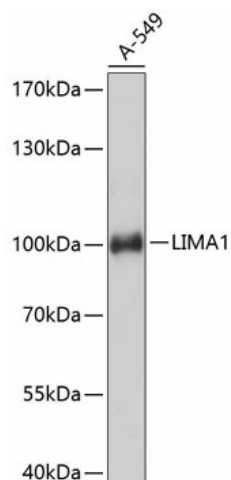
#### **Product data:**

<b>Product Type:</b>	Primary Antibodies
<b>Applications:</b>	IHC, WB
<b>Recommended Dilution:</b>	WB, 1:500 - 1:2000 IHC, 1:100 - 1:200
<b>Reactivity:</b>	Human
<b>Modifications:</b>	Unmodified
<b>Host:</b>	Rabbit
<b>Isotype:</b>	IgG
<b>Clonality:</b>	Polyclonal
<b>Immunogen:</b>	Recombinant fusion protein containing a sequence corresponding to amino acids 560-759 of human LIMA1 (NP_057441.1).
<b>Formulation:</b>	Buffer: PBS with 0.02% sodium azide, 50% glycerol, pH 7.3.
<b>Concentration:</b>	lot specific
<b>Purification:</b>	Affinity purification
<b>Conjugation:</b>	Unconjugated
<b>Storage:</b>	Store at -20°C. Avoid freeze / thaw cycles.
<b>Stability:</b>	Shelf life: one year from despatch.
<b>Predicted Protein Size:</b>	51kDa/67kDa/85kDa
<b>Gene Name:</b>	LIM domain and actin binding 1
<b>Database Link:</b>	<a href="#">Entrez Gene 51474 Human Q9UHB6</a>
<b>Background:</b>	This gene encodes a cytoskeleton-associated protein that inhibits actin filament depolymerization and cross-links filaments in bundles. It is downregulated in some cancer cell lines. Alternatively spliced transcript variants encoding different isoforms have been described for this gene, and expression of some of the variants maybe independently regulated.
<b>Synonyms:</b>	1110021C24Rik; EPLIN; FLJ38853; MGC131726; SREBP3



[View online »](#)

## Product images:



Western blot analysis of extracts of A-549 cells, using LIMA1 antibody (TA378045) at 1:3000 dilution. | Secondary antibody: HRP Goat Anti-Rabbit IgG (H+L) at 1:10000 dilution. | Lysates/proteins: 25ug per lane. | Blocking buffer: 3% nonfat dry milk in TBST. | Detection: ECL Basic Kit . | Exposure time: 10s.