

## Product datasheet for **TA378032**

### LHX9 Rabbit Polyclonal Antibody

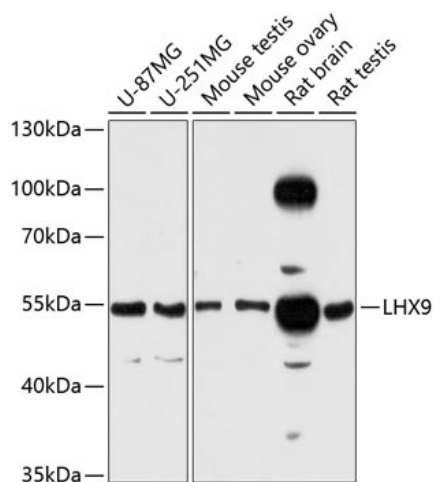
#### Product data:

Product Type:	Primary Antibodies
Applications:	WB
Recommended Dilution:	WB,1:500 - 1:2000
Reactivity:	Human, Mouse, Rat
Modifications:	Unmodified
Host:	Rabbit
Isotype:	IgG
Clonality:	Polyclonal
Immunogen:	Recombinant fusion protein containing a sequence corresponding to amino acids 1-70 of human LHX9 (NP_064589.2).
Formulation:	Buffer: PBS with 0.02% sodium azide,50% glycerol,pH7.3.
Concentration:	lot specific
Purification:	Affinity purification
Conjugation:	Unconjugated
Storage:	Store at -20°C. Avoid freeze / thaw cycles.
Stability:	Shelf life: one year from despatch.
Predicted Protein Size:	36kDa/37kDa/42kDa/43kDa
Gene Name:	LIM homeobox 9
Database Link:	<a href="#">Entrez Gene 56956 Human Q9NQ69</a>
Background:	This gene encodes a member of the LIM homeobox gene family of developmentally expressed transcription factors. The encoded protein contains a homeodomain and two cysteine-rich zinc-binding LIM domains involved in protein-protein interactions. The protein is highly similar to a mouse protein that causes gonadal agenesis when inactivated, suggesting a role in gonadal development. Alternative splicing results in multiple transcript variants.
Synonyms:	LHX9



[View online »](#)

## Product images:



Western blot analysis of extracts of various cell lines, using LHX9 antibody (TA378032) at 1:3000 dilution. | Secondary antibody: HRP Goat Anti-Rabbit IgG (H+L) at 1:10000 dilution. | Lysates/proteins: 25ug per lane. | Blocking buffer: 3% nonfat dry milk in TBST. | Detection: ECL Enhanced Kit. | Exposure time: 90s.