

## Product datasheet for **TA378024**

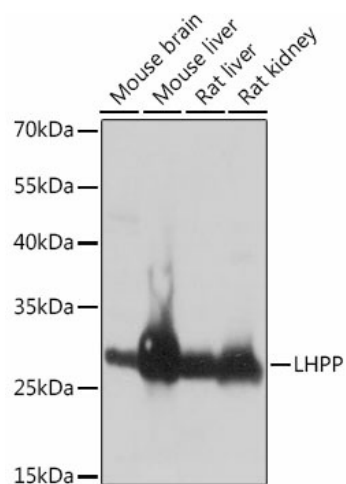
### LHPP Rabbit Polyclonal Antibody

#### Product data:

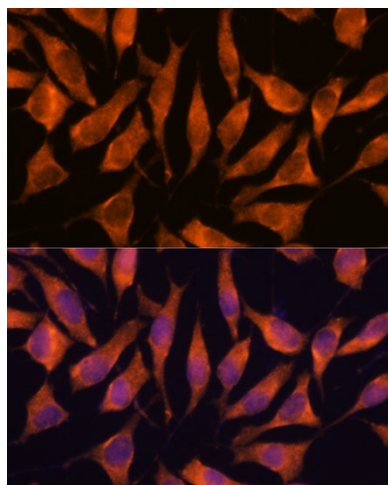
Product Type:	Primary Antibodies
Applications:	ICC/IF, WB
Recommended Dilution:	WB,1:500 - 1:2000 IF,1:50 - 1:200
Reactivity:	Human, Mouse, Rat
Modifications:	Unmodified
Host:	Rabbit
Isotype:	IgG
Clonality:	Polyclonal
Immunogen:	Recombinant fusion protein containing a sequence corresponding to amino acids 1-270 of human LHPP (NP_071409.3).
Formulation:	Buffer: PBS with 0.02% sodium azide,50% glycerol,pH7.3.
Concentration:	lot specific
Purification:	Affinity purification
Conjugation:	Unconjugated
Storage:	Store at -20°C. Avoid freeze / thaw cycles.
Stability:	Shelf life: one year from despatch.
Predicted Protein Size:	22kDa/29kDa
Gene Name:	phospholysine phosphohistidine inorganic pyrophosphate phosphatase
Database Link:	<a href="#">Entrez Gene 64077 Human Q9H008</a>
Background:	Phosphatase that hydrolyzes imidodiphosphate, 3-phosphohistidine and 6-phospholysine. Has broad substrate specificity and can also hydrolyze inorganic diphosphate, but with lower efficiency (By similarity).
Synonyms:	FLJ44846; FLJ46044; HDHD2B; hLHPP; MGC117251; MGC142189; MGC142191



[View online »](#)

**Product images:**

Western blot analysis of extracts of various cell lines, using LHPP antibody (TA378024) at 1:1000 dilution. | Secondary antibody: HRP Goat Anti-Rabbit IgG (H+L) at 1:10000 dilution. | Lysates/proteins: 25ug per lane. | Blocking buffer: 3% nonfat dry milk in TBST. | Detection: ECL Basic Kit . | Exposure time: 3s.



Immunofluorescence analysis of L929 cells using LHPP antibody (TA378024) at dilution of 1:100. Blue: DAPI for nuclear staining.