

Product datasheet for **TA378004S**

Galectin 2 (LGALS2) Rabbit Polyclonal Antibody

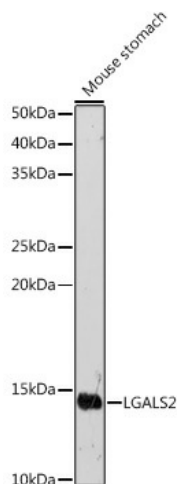
Product data:

| | |
|-------------------------|--|
| Product Type: | Primary Antibodies |
| Applications: | ICC/IF, WB |
| Recommended Dilution: | WB, 1:500 - 1:2000 IF, 1:50 - 1:200 |
| Reactivity: | Human, Mouse |
| Modifications: | Unmodified |
| Host: | Rabbit |
| Isotype: | IgG |
| Clonality: | Polyclonal |
| Immunogen: | Recombinant fusion protein containing a sequence corresponding to amino acids 1-132 of human LGALS2 (NP_006489.1). |
| Formulation: | Buffer: PBS with 0.02% sodium azide, 50% glycerol, pH 7.3. |
| Concentration: | lot specific |
| Purification: | Affinity purification |
| Conjugation: | Unconjugated |
| Storage: | Store at -20°C. Avoid freeze / thaw cycles. |
| Stability: | Shelf life: one year from despatch. |
| Predicted Protein Size: | 14kDa |
| Gene Name: | galectin 2 |
| Database Link: | Entrez Gene 3957 Human P05162 |
| Background: | The protein encoded by this gene is a soluble beta-galactoside binding lectin. The encoded protein is found as a homodimer and can bind to lymphotoxin-alpha. A single nucleotide polymorphism in an intron of this gene can alter the transcriptional level of the protein, with a resultant increased risk of myocardial infarction. |
| Synonyms: | HL14; MGC75071 |

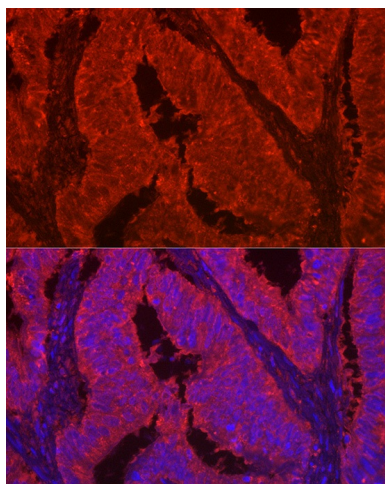


[View online »](#)

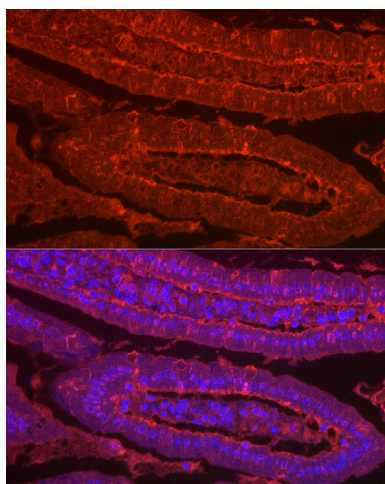
Product images:



Western blot analysis of extracts of Mouse stomach, using LGALS2 antibody ([TA378004]) at 1:500 dilution. | Secondary antibody: HRP Goat Anti-Rabbit IgG (H+L) at 1:10000 dilution. | Lysates/proteins: 25ug per lane. | Blocking buffer: 3% nonfat dry milk in TBST. | Detection: ECL Basic Kit . | Exposure time: 180s.



Immunofluorescence analysis of human colon carcinoma using LGALS2 Rabbit pAb ([TA378004]) at dilution of 1:100 (40x lens). Blue: DAPI for nuclear staining.



Immunofluorescence analysis of mouse Intestine using LGALS2 Rabbit pAb ([TA378004]) at dilution of 1:100 (40x lens). Blue: DAPI for nuclear staining.

