

Product datasheet for **TA378001**

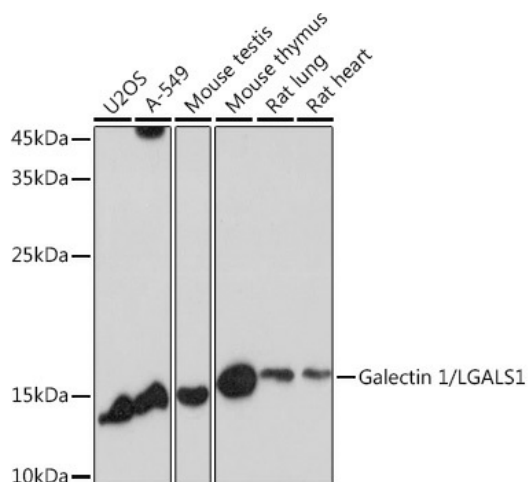
Galectin 1 (LGALS1) Rabbit Polyclonal Antibody

Product data:

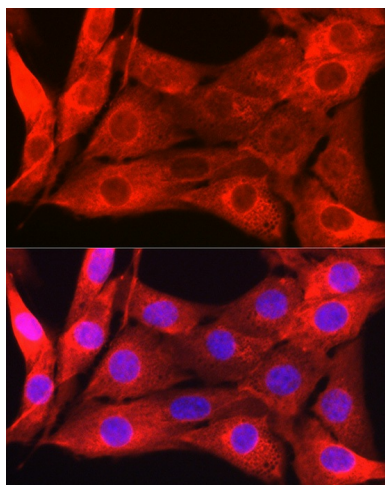
Product Type:	Primary Antibodies
Applications:	ICC/IF, WB
Recommended Dilution:	WB,1:1000 - 1:4000 IF,1:50 - 1:200
Reactivity:	Human, Mouse, Rat
Modifications:	Unmodified
Host:	Rabbit
Isotype:	IgG
Clonality:	Polyclonal
Immunogen:	Recombinant fusion protein containing a sequence corresponding to amino acids 1-135 of human Galectin 1/Galectin 1/LGALS1 (NP_002296.1).
Formulation:	Buffer: PBS with 0.02% sodium azide,50% glycerol,pH7.3.
Concentration:	lot specific
Purification:	Affinity purification
Conjugation:	Unconjugated
Storage:	Store at -20°C. Avoid freeze / thaw cycles.
Stability:	Shelf life: one year from despatch.
Predicted Protein Size:	14kDa
Gene Name:	galectin 1
Database Link:	Entrez Gene 3956 Human P09382
Background:	The galectins are a family of beta-galactoside-binding proteins implicated in modulating cell-cell and cell-matrix interactions. This gene product may act as an autocrine negative growth factor that regulates cell proliferation.
Synonyms:	DKFZp686E23103; GAL1; galaptin; galectin-1; GBP; HBL; HPL



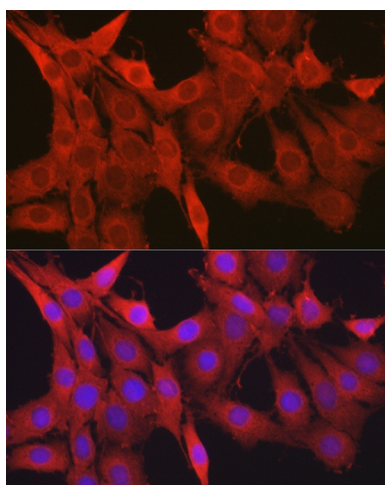
[View online »](#)

Product images:


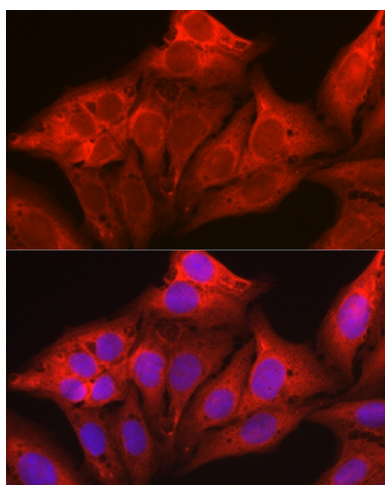
Western blot analysis of extracts of various cell lines, using Galectin 1/LGALS1 antibody (TA378001) at 1:1000 dilution. |Secondary antibody: HRP Goat Anti-Rabbit IgG (H+L) at 1:10000 dilution. |Lysates/proteins: 25ug per lane. |Blocking buffer: 3% nonfat dry milk in TBST. |Detection: ECL Basic Kit . |Exposure time: 30s.



Immunofluorescence analysis of NIH/3T3 cells using Galectin 1/LGALS1 Rabbit pAb (TA378001) at dilution of 1:50 (40x lens). Blue: DAPI for nuclear staining.



Immunofluorescence analysis of PC-12 cells using Galectin 1/LGALS1 Rabbit pAb (TA378001) at dilution of 1:50 (40x lens). Blue: DAPI for nuclear staining.



Immunofluorescence analysis of U2OS cells using Galectin 1/LGALS1 Rabbit pAb (TA378001) at dilution of 1:50 (40x lens). Blue: DAPI for nuclear staining.