

## Product datasheet for **TA377991**

### LEMD2 Rabbit Polyclonal Antibody

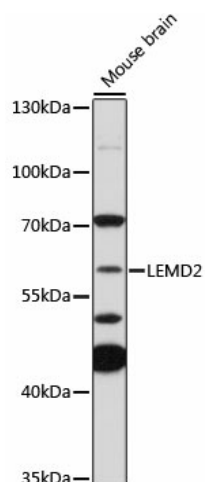
#### Product data:

Product Type:	Primary Antibodies
Applications:	WB
Recommended Dilution:	WB,1:500 - 1:2000
Reactivity:	Mouse
Host:	Rabbit
Isotype:	IgG
Clonality:	Polyclonal
Immunogen:	Recombinant protein of human LEMD2.
Formulation:	Buffer: PBS with 0.02% sodium azide,50% glycerol,pH7.3.
Concentration:	lot specific
Purification:	Affinity purification
Conjugation:	Unconjugated
Storage:	Store at -20°C. Avoid freeze / thaw cycles.
Stability:	Shelf life: one year from despatch.
Gene Name:	LEM domain containing 2
Database Link:	<a href="#">Q8NC56</a>
Background:	This gene encodes a LEM domain-containing transmembrane protein of the inner nuclear membrane. The protein is involved in nuclear structure organization and plays a role in cell signaling and differentiation. Mutations in this gene result in Cataract 46, juvenile-onset. Multiple transcript variants have been found for this gene. [provided by RefSeq, Feb 2017]
Synonyms:	dJ482C21.1; hLEM2; NET25



[View online »](#)

## Product images:



Western blot analysis of extracts of mouse brain, using LEMD2 Antibody (TA377991) at 1:1000 dilution. | Secondary antibody: HRP Goat Anti-Rabbit IgG (H+L) at 1:10000 dilution. | Lysates/proteins: 25ug per lane. | Blocking buffer: 3% nonfat dry milk in TBST. | Detection: ECL Basic Kit . | Exposure time: 3min.