

Product datasheet for **TA377978**

LDB3 Rabbit Polyclonal Antibody

Product data:

Product Type:	Primary Antibodies
Applications:	ICC/IF, IHC, WB
Recommended Dilution:	WB,1:500 - 1:2000 IHC,1:50 - 1:200 IF,1:50 - 1:200
Reactivity:	Human, Mouse, Rat
Modifications:	Unmodified
Host:	Rabbit
Isotype:	IgG
Clonality:	Polyclonal
Immunogen:	Recombinant fusion protein containing a sequence corresponding to amino acids 1-283 of human LDB3 (NP_001073585.1).
Formulation:	Buffer: PBS with 0.02% sodium azide,50% glycerol,pH7.3.
Concentration:	lot specific
Purification:	Affinity purification
Conjugation:	Unconjugated
Storage:	Store at -20°C. Avoid freeze / thaw cycles.
Stability:	Shelf life: one year from despatch.
Predicted Protein Size:	30kDa/35kDa/42kDa/50kDa/66kDa/77kDa/78kDa
Gene Name:	LIM domain binding 3
Database Link:	Entrez Gene 11155 Human O75112



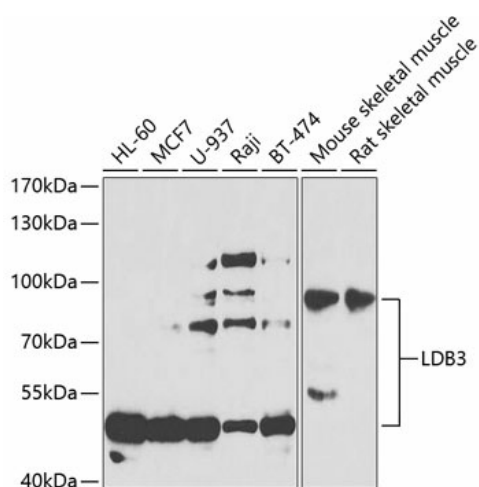
[View online »](#)

Background:

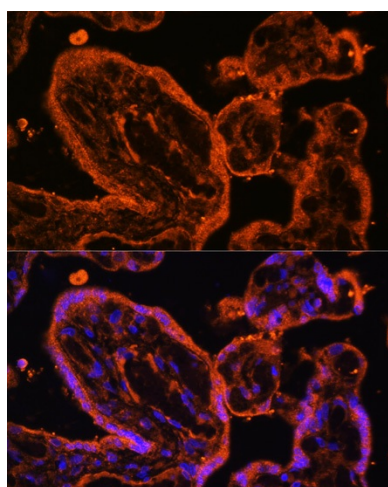
This gene encodes a PDZ domain-containing protein. PDZ motifs are modular protein-protein interaction domains consisting of 80-120 amino acid residues. PDZ domain-containing proteins interact with each other in cytoskeletal assembly or with other proteins involved in targeting and clustering of membrane proteins. The protein encoded by this gene interacts with alpha-actinin-2 through its N-terminal PDZ domain and with protein kinase C via its C-terminal LIM domains. The LIM domain is a cysteine-rich motif defined by 50-60 amino acids containing two zinc-binding modules. This protein also interacts with all three members of the myozenin family. Mutations in this gene have been associated with myofibrillar myopathy and dilated cardiomyopathy. Alternatively spliced transcript variants encoding different isoforms have been identified; all isoforms have N-terminal PDZ domains while only longer isoforms (1, 2 and 5) have C-terminal LIM domains.

Synonyms:

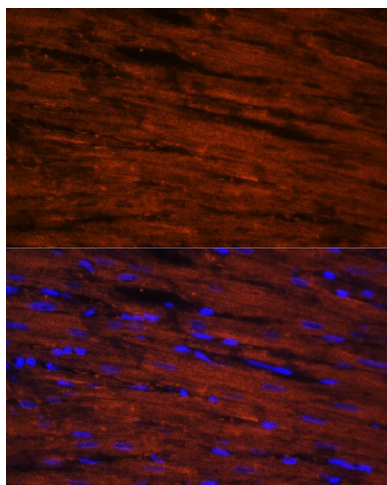
CYPHER; FLJ35865; KIAA01613; KIAA0613; ldb3z1; ldb3z4; ORACLE; PDLIM6; ZASP

Product images:


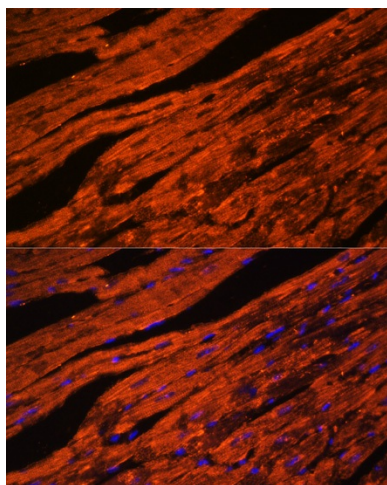
Western blot analysis of extracts of various cell lines, using LDB3 antibody (TA377978) at 1:1000 dilution. | Secondary antibody: HRP Goat Anti-Rabbit IgG (H+L) at 1:10000 dilution. | Lysates/proteins: 25ug per lane. | Blocking buffer: 3% nonfat dry milk in TBST. | Detection: ECL Basic Kit. | Exposure time: 90s.



Immunofluorescence analysis of human placenta cells using LDB3 antibody (TA377978) at dilution of 1:100. Blue: DAPI for nuclear staining.



Immunofluorescence analysis of rat heart cells using LDB3 antibody (TA377978) at dilution of 1:100. Blue: DAPI for nuclear staining.



Immunofluorescence analysis of mouse heart cells using LDB3 antibody (TA377978) at dilution of 1:100. Blue: DAPI for nuclear staining.