

## Product datasheet for **TA377977S**

### LDB2 Rabbit Polyclonal Antibody

#### Product data:

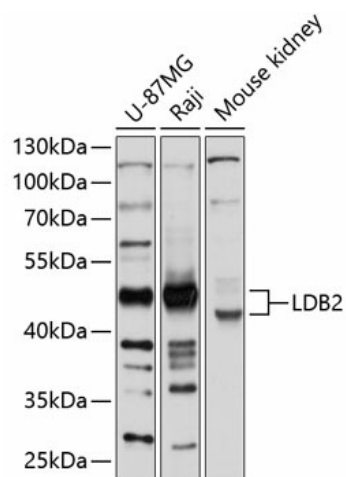
Product Type:	Primary Antibodies
Applications:	IHC, WB
Recommended Dilution:	WB,1:500 - 1:2000 IHC,1:50 - 1:200
Reactivity:	Human, Mouse
Modifications:	Unmodified
Host:	Rabbit
Isotype:	IgG
Clonality:	Polyclonal
Immunogen:	Recombinant fusion protein containing a sequence corresponding to amino acids 204-373 of human LDB2 (NP_001281.1).
Formulation:	Buffer: PBS with 0.02% sodium azide,50% glycerol,pH7.3.
Concentration:	lot specific
Purification:	Affinity purification
Conjugation:	Unconjugated
Storage:	Store at -20°C. Avoid freeze / thaw cycles.
Stability:	Shelf life: one year from despatch.
Predicted Protein Size:	38kDa/39kDa/42kDa
Gene Name:	LIM domain binding 2
Database Link:	<a href="#">Entrez Gene 9079 Human O43679</a>
Background:	The protein encoded by this gene belongs to the LIM-domain binding family. Members of this family are characterized by a conserved nuclear localization sequence, an amino-terminal homodimerization domain and a carboxy-terminal LIM interaction domain. These proteins function as adapter molecules to allow assembly of transcriptional regulatory complexes. Genetic association studies suggest functions for this gene in rhegmatogenous retinal detachment and coronary artery disease. Alternative splicing results in multiple transcript variants.



[View online »](#)

Synonyms: CLIM-1; CLIM1; LDB1

### Product images:



Western blot analysis of extracts of various cell lines, using LDB2 antibody ([TA377977]) at 1:1000 dilution. | Secondary antibody: HRP Goat Anti-Rabbit IgG (H+L) at 1:10000 dilution. | Lysates/proteins: 25ug per lane. | Blocking buffer: 3% nonfat dry milk in TBST. | Detection: ECL Basic Kit . | Exposure time: 5s.