

## Product datasheet for **TA377976S**

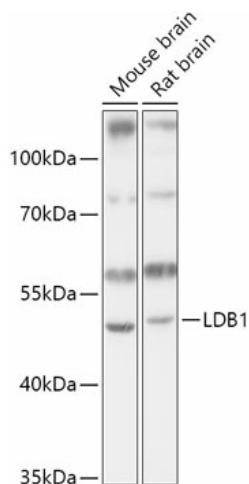
### LDB1 Rabbit Polyclonal Antibody

#### Product data:

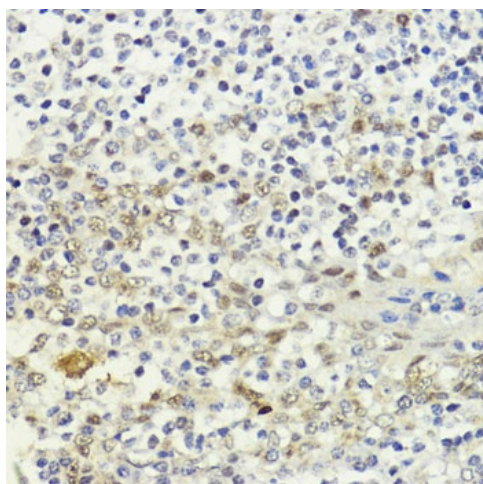
Product Type:	Primary Antibodies
Applications:	ELISA, IHC, WB
Recommended Dilution:	WB,1:500 - 1:2000 IHC-P,1:50 - 1:100 ELISA,Recommended starting concentration is 1 µg/mL. Please optimize the concentration based on your specific assay requirements.
Reactivity:	Human, Mouse, Rat
Modifications:	Unmodified
Host:	Rabbit
Isotype:	IgG
Clonality:	Polyclonal
Formulation:	Buffer: PBS with 0.02% sodium azide,50% glycerol,pH7.3.
Concentration:	lot specific
Purification:	Affinity purification
Conjugation:	Unconjugated
Storage:	Store at -20°C. Avoid freeze / thaw cycles.
Stability:	Shelf life: one year from despatch.
Predicted Protein Size:	47kDa
Gene Name:	LIM domain binding 1
Database Link:	<a href="#">Entrez Gene 8861 Human Q86U70</a>
Background:	Enables LIM domain binding activity; RNA polymerase II-specific DNA-binding transcription factor binding activity; and enzyme binding activity. Involved in negative regulation of transcription, DNA-templated and positive regulation of transcription by RNA polymerase II. Located in chromatin. Part of beta-catenin-TCF complex.
Synonyms:	CLIM-2; CLIM2; hLdb1; NLI



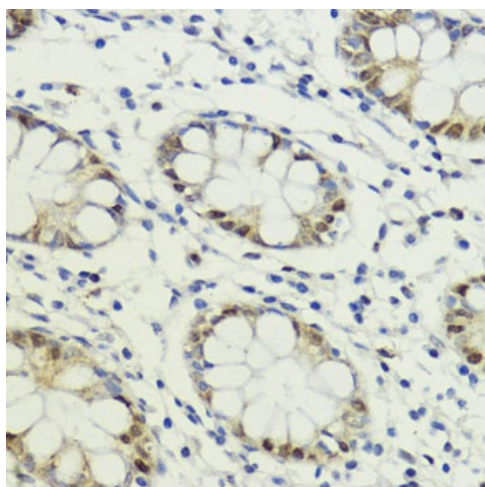
[View online »](#)

**Product images:**

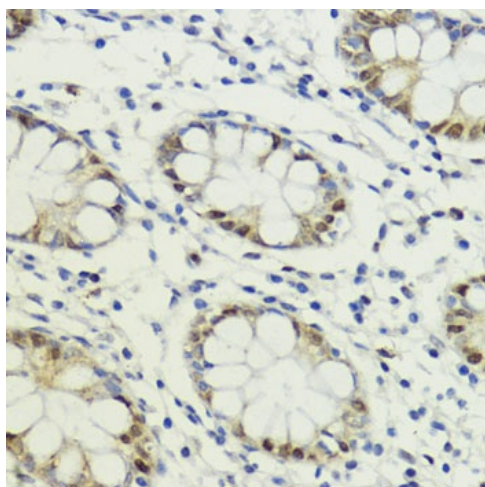
Western blot analysis of various lysates using LDB1 Rabbit pAb ([TA377976]) at 1:1000 dilution. Secondary antibody: HRP-conjugated Goat anti-Rabbit IgG (H+L) (AS014) at 1:10000 dilution. Lysates/proteins: 25 $\mu$ g per lane. Blocking buffer: 3% nonfat dry milk in TBST. Detection: ECL Basic Kit (RM00020). Exposure time: 10s.



Immunohistochemistry analysis of paraffin-embedded Human uterine cancer using LDB1 Rabbit pAb ([TA377976]) at dilution of 1:200 (40x lens). Microwave antigen retrieval performed with 0.01M PBS Buffer (pH 7.2) prior to IHC staining.



Immunohistochemistry analysis of paraffin-embedded Human tonsil using LDB1 Rabbit pAb ([TA377976]) at dilution of 1:200 (40x lens). Microwave antigen retrieval performed with 0.01M PBS Buffer (pH 7.2) prior to IHC staining.



Immunohistochemistry analysis of paraffin-embedded Human colon using LDB1 Rabbit pAb ([TA377976]) at dilution of 1:200 (40x lens). Microwave antigen retrieval performed with 0.01M PBS Buffer (pH 7.2) prior to IHC staining.