

Product datasheet for **TA377956S**

LARP4 Rabbit Polyclonal Antibody

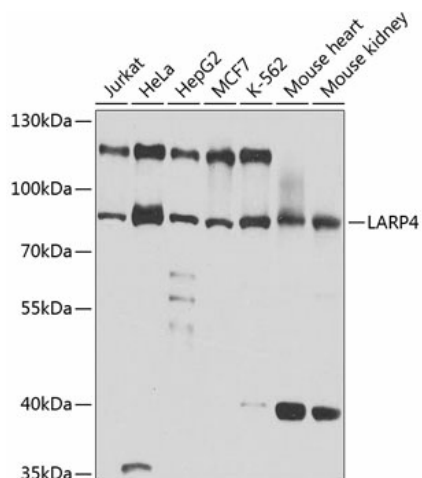
Product data:

Product Type:	Primary Antibodies
Applications:	ELISA, ICC/IF, WB
Recommended Dilution:	WB,1:500 - 1:1000 IF/ICC,1:50 - 1:200 ELISA,Recommended starting concentration is 1 µg/mL. Please optimize the concentration based on your specific assay requirements.
Reactivity:	Mouse, Rat
Modifications:	Unmodified
Host:	Rabbit
Isotype:	IgG
Clonality:	Polyclonal
Formulation:	Buffer: PBS with 0.02% sodium azide,50% glycerol,pH7.3.
Concentration:	lot specific
Purification:	Affinity purification
Conjugation:	Unconjugated
Storage:	Store at -20°C. Avoid freeze / thaw cycles.
Stability:	Shelf life: one year from despatch.
Predicted Protein Size:	81kDa
Gene Name:	La ribonucleoprotein domain family member 4
Database Link:	Q71RC2
Background:	Enables mRNA 3'-UTR binding activity and poly(A) binding activity. Involved in cytoskeleton organization; positive regulation of translation; and regulation of cell morphogenesis. Located in cytosol. Colocalizes with cytoplasmic stress granule; cytosolic small ribosomal subunit; and polysome.
Synonyms:	DKFZp686E039; MGC74631; PP13296

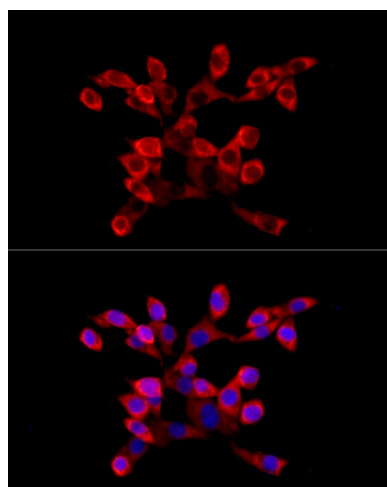


[View online »](#)

Product images:



Western blot analysis of lysates from Rat kidney



Immunofluorescence analysis of NIH/3T3 cells using LARP4 Rabbit pAb ([TA377956]) at dilution of 1:100 (40x lens). Secondary antibody: Cy3-conjugated Goat anti-Rabbit IgG (H+L) (AS007) at 1:500 dilution. Blue: DAPI for nuclear staining.