

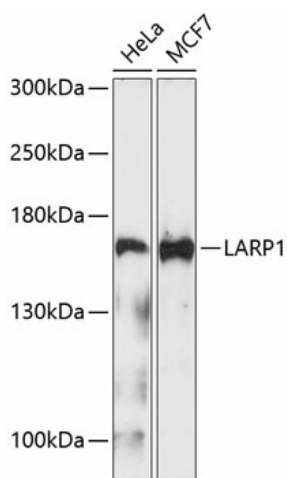
## Product datasheet for **TA377954S**

### LARP1 Rabbit Polyclonal Antibody

#### Product data:

Product Type:	Primary Antibodies
Applications:	ELISA, WB
Recommended Dilution:	WB, 1:500 - 1:2000 ELISA, Recommended starting concentration is 1 µg/mL. Please optimize the concentration based on your specific assay requirements.
Reactivity:	Human
Modifications:	Unmodified
Host:	Rabbit
Isotype:	IgG
Clonality:	Polyclonal
Formulation:	Buffer: PBS with 0.02% sodium azide, 50% glycerol, pH 7.3.
Concentration:	lot specific
Purification:	Affinity purification
Conjugation:	Unconjugated
Storage:	Store at -20°C. Avoid freeze / thaw cycles.
Stability:	Shelf life: one year from despatch.
Predicted Protein Size:	124kDa
Gene Name:	La ribonucleoprotein domain family member 1
Database Link:	<a href="#">Entrez Gene 23367 Human</a> <a href="#">Q6PKG0</a>
Background:	Enables eukaryotic initiation factor 4E binding activity; nucleic acid binding activity; and ribosomal small subunit binding activity. Involved in several processes, including TORC1 signaling; cellular response to rapamycin; and posttranscriptional regulation of gene expression. Located in cytoplasmic stress granule. Colocalizes with TORC1 complex and polysomal ribosome.
Synonyms:	KIAA0731; LARP; MGC19556

[View online »](#)

**Product images:**

Western blot analysis of various lysates using LARP1 Rabbit pAb (TA377954) at 1:1000 dilution. Secondary antibody: HRP-conjugated Goat anti-Rabbit IgG (H+L) (AS014) at 1:10000 dilution. Lysates/proteins: 25µg per lane. Blocking buffer: 3% nonfat dry milk in TBST. Detection: ECL Enhanced Kit (RM00021). Exposure time: 90s.