

Product datasheet for **TA377953S**

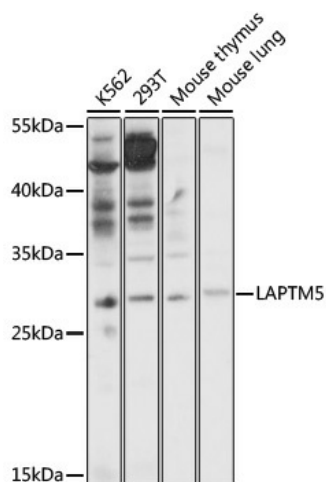
LAPTM5 Rabbit Polyclonal Antibody

Product data:

Product Type:	Primary Antibodies
Applications:	ELISA, WB
Recommended Dilution:	WB, 1:500 - 1:1000 ELISA, Recommended starting concentration is 1 µg/mL. Please optimize the concentration based on your specific assay requirements.
Reactivity:	Human, Mouse, Rat
Host:	Rabbit
Isotype:	IgG
Clonality:	Polyclonal
Formulation:	Buffer: PBS with 0.02% sodium azide, 50% glycerol, pH 7.3.
Concentration:	lot specific
Purification:	Affinity purification
Conjugation:	Unconjugated
Storage:	Store at -20°C. Avoid freeze / thaw cycles.
Stability:	Shelf life: one year from despatch.
Predicted Protein Size:	30kDa
Gene Name:	lysosomal protein transmembrane 5
Database Link:	Entrez Gene 7805 Human Q13571
Background:	This gene encodes a transmembrane receptor that is associated with lysosomes. The encoded protein, also known as E3 protein, may play a role in hematopoiesis.
Synonyms:	CLAST6; FLJ61683; FLJ97251; KIAA0085; MGC125860; MGC125861

[View online »](#)

Product images:



Western blot analysis of various lysates using LAPTM5 Rabbit pAb (TA377953) at 1:1000 dilution.

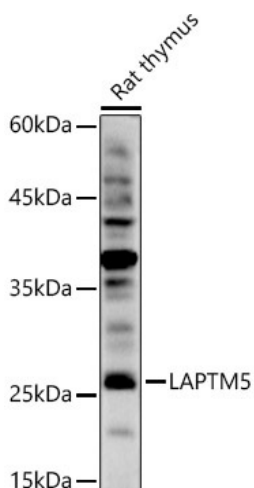
Secondary antibody: HRP-conjugated Goat anti-Rabbit IgG (H+L) (AS014) at 1:10000 dilution.

Lysates/proteins: 25µg per lane.

Blocking buffer: 3% nonfat dry milk in TBST.

Detection: ECL Basic Kit (RM00020).

Exposure time: 30s.



Western blot analysis of lysates from Rat thymus