

Product datasheet for **TA377928S**

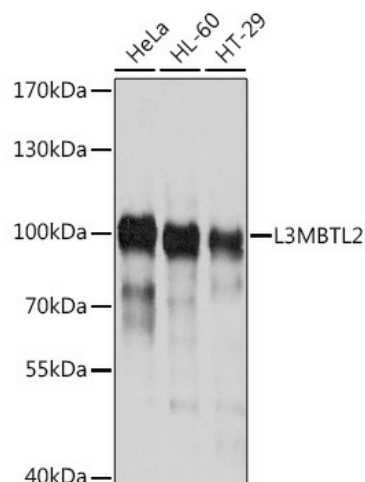
L3MBTL2 Rabbit Polyclonal Antibody

Product data:

Product Type:	Primary Antibodies
Applications:	ELISA, WB
Recommended Dilution:	WB, 1:1000 - 1:2000 ELISA, Recommended starting concentration is 1 µg/mL. Please optimize the concentration based on your specific assay requirements.
Reactivity:	Human
Modifications:	Unmodified
Host:	Rabbit
Isotype:	IgG
Clonality:	Polyclonal
Formulation:	Buffer: PBS with 0.02% sodium azide, 50% glycerol, pH 7.3.
Concentration:	lot specific
Purification:	Affinity purification
Conjugation:	Unconjugated
Storage:	Store at -20°C. Avoid freeze / thaw cycles.
Stability:	Shelf life: one year from despatch.
Predicted Protein Size:	79kDa
Gene Name:	L3MBTL2 polycomb repressive complex 1 subunit
Database Link:	Entrez Gene 83746 Human Q969R5
Background:	Enables methylated histone binding activity. Predicted to be involved in negative regulation of transcription, DNA-templated. Predicted to act upstream of or within several processes, including ectoderm development; regulation of histone modification; and stem cell proliferation. Located in nucleus.
Synonyms:	dj756G23.3; DKFZP761I141; H-l(3)mbt-l; L3MBT



[View online »](#)

Product images:


Western blot analysis of various lysates using L3MBTL2 Rabbit pAb (TA377928) at 1:1000 dilution.

Secondary antibody: HRP-conjugated Goat anti-Rabbit IgG (H+L) (AS014) at 1:10000 dilution.

Lysates/proteins: 25µg per lane.

Blocking buffer: 3% nonfat dry milk in TBST.

Detection: ECL Basic Kit (RM00020).

Exposure time: 5s.