

Product datasheet for **TA377926S**

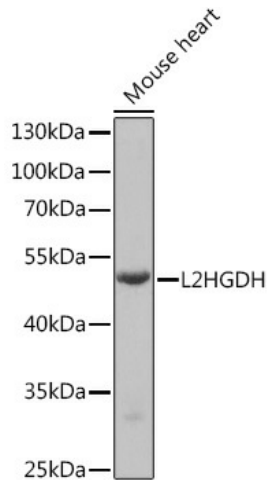
L2HGDH Rabbit Polyclonal Antibody

Product data:

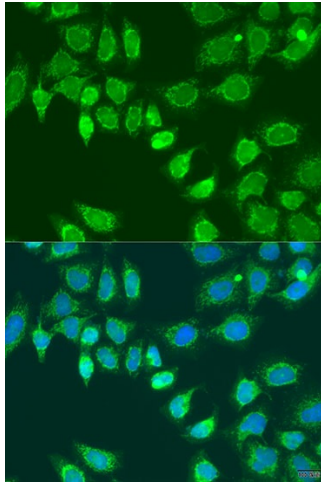
Product Type:	Primary Antibodies
Applications:	ICC/IF, WB
Recommended Dilution:	WB,1:500 - 1:2000 IF,1:50 - 1:200
Reactivity:	Human, Mouse
Modifications:	Unmodified
Host:	Rabbit
Isotype:	IgG
Clonality:	Polyclonal
Immunogen:	Recombinant fusion protein containing a sequence corresponding to amino acids 1-220 of human L2HGDH (NP_079160.1).
Formulation:	Buffer: PBS with 0.02% sodium azide,50% glycerol,pH7.3.
Concentration:	lot specific
Purification:	Affinity purification
Conjugation:	Unconjugated
Storage:	Store at -20°C. Avoid freeze / thaw cycles.
Stability:	Shelf life: one year from despatch.
Predicted Protein Size:	48kDa/50kDa
Gene Name:	L-2-hydroxyglutarate dehydrogenase
Database Link:	Entrez Gene 79944 Human Q9H9P8
Background:	This gene encodes L-2-hydroxyglutarate dehydrogenase, a FAD-dependent enzyme that oxidizes L-2-hydroxyglutarate to alpha-ketoglutarate in a variety of mammalian tissues. Mutations in this gene cause L-2-hydroxyglutaric aciduria, a rare autosomal recessive neurometabolic disorder resulting in moderate to severe mental retardation.
Synonyms:	C14orf160; DURANIN; FLJ12618



[View online »](#)

Product images:

Western blot analysis of extracts of Mouse heart, using L2HGDH Rabbit pAb ([TA377926]) at 1:1000 dilution. | Secondary antibody: HRP Goat Anti-Rabbit IgG (H+L) at 1:10000 dilution. | Lysates/proteins: 25ug per lane. | Blocking buffer: 3% nonfat dry milk in TBST. | Detection: ECL Basic Kit . | Exposure time: 90s.



Immunofluorescence analysis of U2OS cells using L2HGDH antibody ([TA377926]) at dilution of 1:100. Blue: DAPI for nuclear staining.