

## Product datasheet for **TA377925S**

### L1CAM Rabbit Polyclonal Antibody

#### Product data:

Product Type:	Primary Antibodies
Applications:	ICC/IF, WB
Recommended Dilution:	WB,1:500 - 1:2000 IF,1:50 - 1:200
Reactivity:	Human, Mouse, Rat
Modifications:	Unmodified
Host:	Rabbit
Isotype:	IgG
Clonality:	Polyclonal
Immunogen:	Recombinant fusion protein containing a sequence corresponding to amino acids 1143-1257 of human L1CAM (NP_000416.1).
Formulation:	Buffer: PBS with 0.02% sodium azide,50% glycerol,pH7.3.
Concentration:	lot specific
Purification:	Affinity purification
Conjugation:	Unconjugated
Storage:	Store at -20°C. Avoid freeze / thaw cycles.
Stability:	Shelf life: one year from despatch.
Predicted Protein Size:	138kDa/139kDa/140kDa
Gene Name:	L1 cell adhesion molecule
Database Link:	<a href="#">Entrez Gene 3897 Human P32004</a>



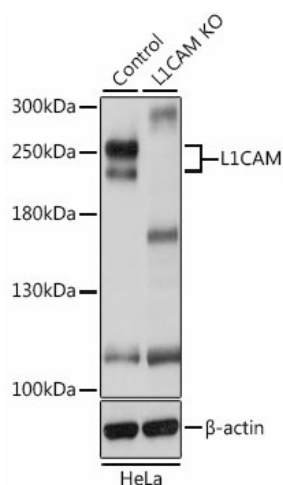
[View online »](#)

**Background:**

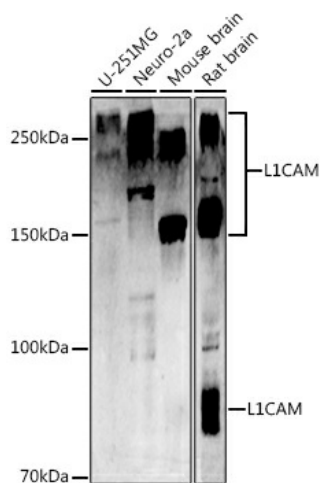
The protein encoded by this gene is an axonal glycoprotein belonging to the immunoglobulin supergene family. The ectodomain, consisting of several immunoglobulin-like domains and fibronectin-like repeats (type III), is linked via a single transmembrane sequence to a conserved cytoplasmic domain. This cell adhesion molecule plays an important role in nervous system development, including neuronal migration and differentiation. Mutations in the gene cause X-linked neurological syndromes known as CRASH (corpus callosum hypoplasia, retardation, aphasia, spastic paraplegia and hydrocephalus). Alternative splicing of this gene results in multiple transcript variants, some of which include an alternate exon that is considered to be specific to neurons.

**Synonyms:**

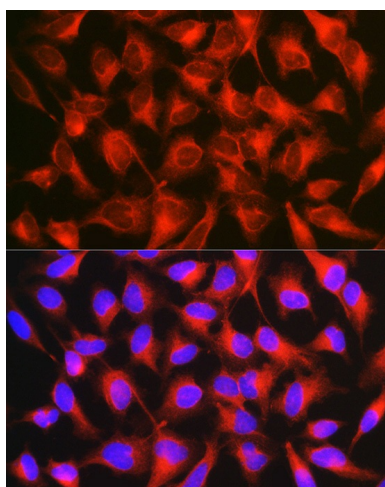
CAML1; CD171; HSAS; HSAS1; MASA; MIC5; N-CAML1; OTTHUMP00000025992; OTTHUMP00000063091; S10; SPG1

**Product images:**


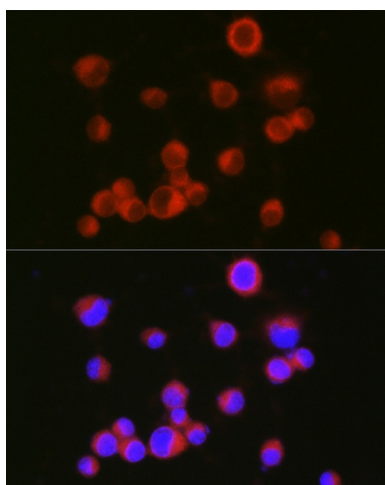
Western blot analysis of extracts from normal (control) and L1CAM knockout (KO) HeLa cells, using L1CAM antibody ([TA377925]) at 1:1000 dilution. | Secondary antibody: HRP Goat Anti-Rabbit IgG (H+L) at 1:10000 dilution. | Lysates/proteins: 25ug per lane. | Blocking buffer: 3% nonfat dry milk in TBST. | Detection: ECL Basic Kit . | Exposure time: 1s.



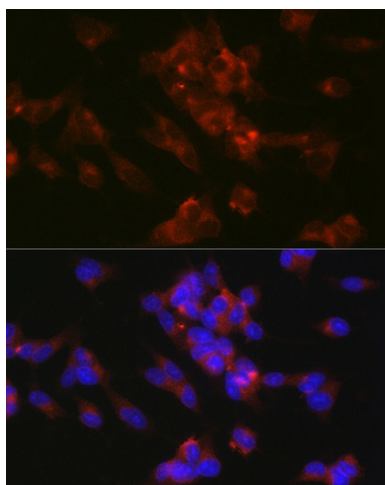
Western blot analysis of extracts of various cell lines, using L1CAM antibody ([TA377925]) at 1:1000 dilution. | Secondary antibody: HRP Goat Anti-Rabbit IgG (H+L) at 1:10000 dilution. | Lysates/proteins: 25ug per lane. | Blocking buffer: 3% nonfat dry milk in TBST. | Detection: ECL Basic Kit . | Exposure time: 30s.



Immunofluorescence analysis of HeLa cells using [KO Validated] L1CAM Rabbit pAb ([TA377925]) at dilution of 1:150 (40x lens). Blue: DAPI for nuclear staining.



Immunofluorescence analysis of Neuro-2a cells using [KO Validated] L1CAM Rabbit pAb ([TA377925]) at dilution of 1:150 (40x lens). Blue: DAPI for nuclear staining.



Immunofluorescence analysis of SH-SY5Y cells using [KO Validated] L1CAM Rabbit pAb ([TA377925]) at dilution of 1:150 (40x lens). Blue: DAPI for nuclear staining.