

## Product datasheet for **TA377919S**

### **KSR1 Rabbit Polyclonal Antibody**

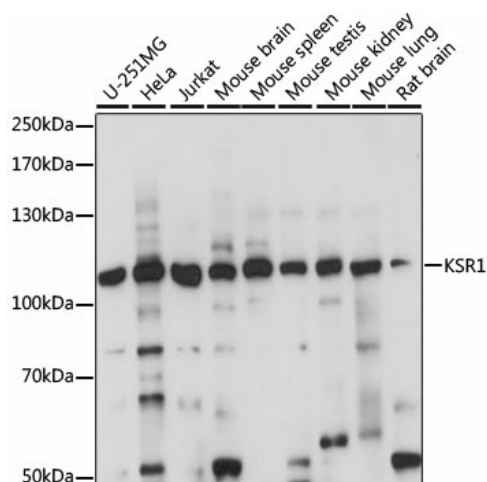
#### **Product data:**

Product Type:	Primary Antibodies
Applications:	ELISA, ICC/IF, WB
Recommended Dilution:	WB, 1:500 - 1:2000 IF/ICC, 1:50 - 1:100 ELISA, Recommended starting concentration is 1 µg/mL. Please optimize the concentration based on your specific assay requirements.
Reactivity:	Human, Mouse, Rat
Modifications:	Unmodified
Host:	Rabbit
Isotype:	IgG
Clonality:	Polyclonal
Formulation:	Buffer: PBS with 0.02% sodium azide, 50% glycerol, pH 7.3.
Concentration:	lot specific
Purification:	Affinity purification
Conjugation:	Unconjugated
Storage:	Store at -20°C. Avoid freeze / thaw cycles.
Stability:	Shelf life: one year from despatch.
Predicted Protein Size:	102kDa
Gene Name:	kinase suppressor of ras 1
Database Link:	<a href="#">Entrez Gene 8844 Human Q8IVT5</a>
Background:	Enables 14-3-3 protein binding activity; ATP binding activity; and protein C-terminus binding activity. Involved in positive regulation of MAPK cascade. Located in endoplasmic reticulum and membrane. Part of protein-containing complex. Implicated in breast adenocarcinoma. Biomarker of breast cancer.
Synonyms:	KSR; RSU2

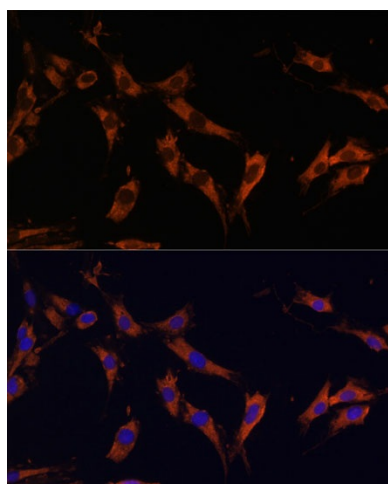


[View online »](#)

## Product images:



Western blot analysis of various lysates using KSR1 Rabbit pAb (TA377919J) at 1:1000 dilution. Secondary antibody: HRP-conjugated Goat anti-Rabbit IgG (H+L) (AS014) at 1:10000 dilution. Lysates/proteins: 25µg per lane. Blocking buffer: 3% nonfat dry milk in TBST. Detection: ECL Basic Kit (RM00020). Exposure time: 10s.



Immunofluorescence analysis of C6 cells using KSR1 Rabbit pAb (TA377919J) at dilution of 1:100 (40x lens). Secondary antibody: Cy3-conjugated Goat anti-Rabbit IgG (H+L) (AS007) at 1:500 dilution. Blue: DAPI for nuclear staining.