

Product datasheet for **TA377919**

KSR1 Rabbit Polyclonal Antibody

Product data:

Product Type:	Primary Antibodies
Applications:	ICC/IF, WB
Recommended Dilution:	WB,1:500 - 1:2000 IF,1:50 - 1:100
Reactivity:	Human, Mouse, Rat
Modifications:	Unmodified
Host:	Rabbit
Isotype:	IgG
Clonality:	Polyclonal
Immunogen:	Recombinant fusion protein containing a sequence corresponding to amino acids 320-420 of human KSR1 (NP_055053.1).
Formulation:	Buffer: PBS with 0.02% sodium azide,50% glycerol,pH7.3.
Concentration:	lot specific
Purification:	Affinity purification
Conjugation:	Unconjugated
Storage:	Store at -20°C. Avoid freeze / thaw cycles.
Stability:	Shelf life: one year from despatch.
Predicted Protein Size:	84kDa/87kDa/97kDa/102kDa
Gene Name:	kinase suppressor of ras 1
Database Link:	Entrez Gene 8844 Human Q8IVT5



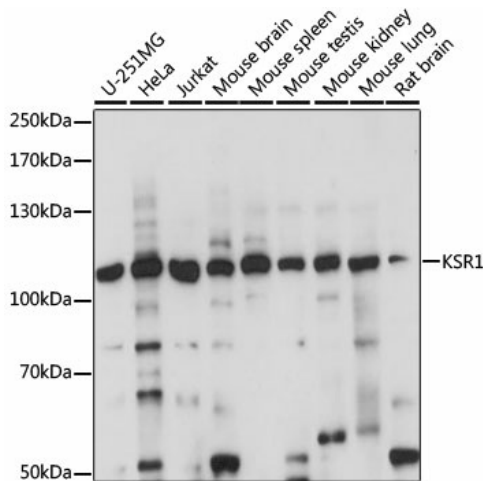
[View online »](#)

Background:

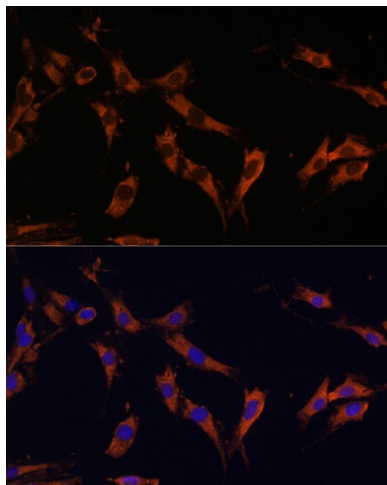
Part of a multiprotein signaling complex which promotes phosphorylation of Raf family members and activation of downstream MAP kinases (By similarity. Independently of its kinase activity, acts as MAP2K1/MEK1 and MAP2K2/MEK2-dependent allosteric activator of BRAF; upon binding to MAP2K1/MEK1 or MAP2K2/MEK2, dimerizes with BRAF and promotes BRAF-mediated phosphorylation of MAP2K1/MEK1 and/or MAP2K2/MEK2. Promotes activation of MAPK1 and/or MAPK3, both in response to EGF and to cAMP (By similarity. Its kinase activity is unsure (By similarity. Some protein kinase activity has been detected in vitro, however the physiological relevance of this activity is unknown (By similarity.

Synonyms:

KSR; RSU2

Product images:


Western blot analysis of extracts of various cell lines, using KSR1 antibody (TA377919) at 1:1000 dilution. | Secondary antibody: HRP Goat Anti-Rabbit IgG (H+L) at 1:10000 dilution. | Lysates/proteins: 25ug per lane. | Blocking buffer: 3% nonfat dry milk in TBST. | Detection: ECL Basic Kit . | Exposure time: 10s.



Immunofluorescence analysis of C6 cells using KSR1 Polyclonal Antibody (TA377919) at dilution of 1:100 (40x lens). Blue: DAPI for nuclear staining.