

Product datasheet for **TA377909S**

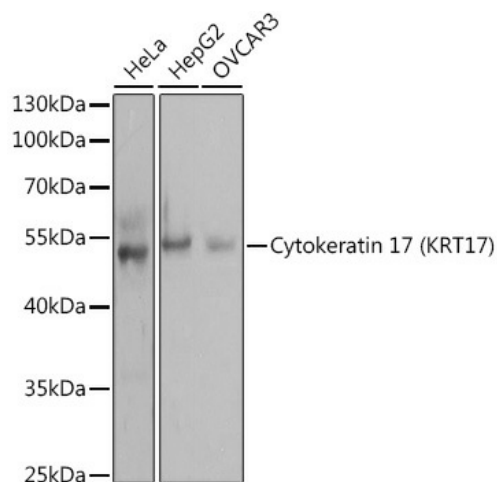
Cytokeratin 17 (KRT17) Rabbit Polyclonal Antibody

Product data:

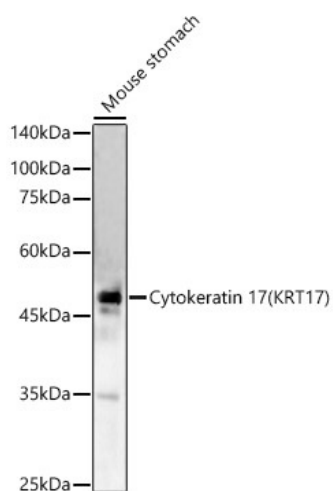
Product Type:	Primary Antibodies
Applications:	ELISA, ICC/IF, WB
Recommended Dilution:	WB, 1:500 - 1:1000 IF/ICC, 1:50 - 1:200 ELISA, Recommended starting concentration is 1 µg/mL. Please optimize the concentration based on your specific assay requirements.
Reactivity:	Human, Mouse, Rat
Modifications:	Unmodified
Host:	Rabbit
Isotype:	IgG
Clonality:	Polyclonal
Formulation:	Buffer: PBS with 0.02% sodium azide, 50% glycerol, pH 7.3.
Concentration:	lot specific
Purification:	Affinity purification
Conjugation:	Unconjugated
Storage:	Store at -20°C. Avoid freeze / thaw cycles.
Stability:	Shelf life: one year from despatch.
Predicted Protein Size:	48kDa
Gene Name:	keratin 17
Database Link:	Entrez Gene 3872 Human Q04695
Background:	This gene encodes the type I intermediate filament chain keratin 17, expressed in nail bed, hair follicle, sebaceous glands, and other epidermal appendages. Mutations in this gene lead to Jackson-Lawler type pachyonychia congenita and steatocystoma multiplex.
Synonyms:	39.1; CK-17; Cytokeratin-17; K17; Keratin-17; PC; PC2; PCHC1



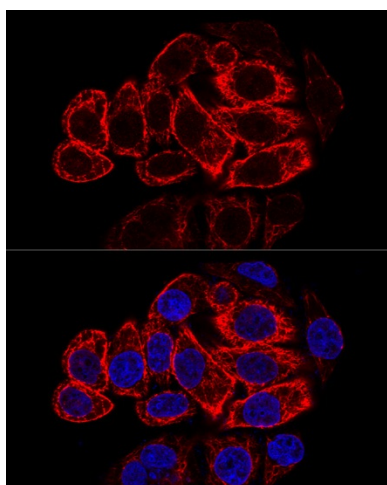
[View online »](#)

Product images:


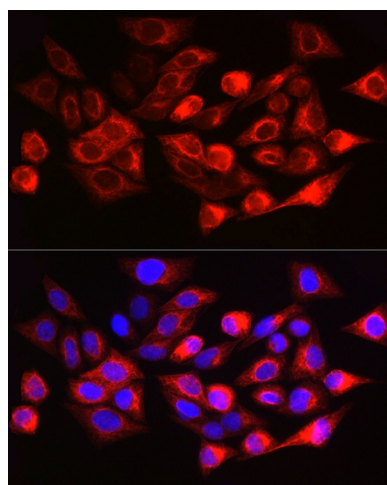
Western blot analysis of various lysates using Cytokeratin 17 (KRT17) Rabbit pAb ([TA377909]) at 1:1000 dilution.
 Secondary antibody: HRP-conjugated Goat anti-Rabbit IgG (H+L) (AS014) at 1:10000 dilution.
 Lysates/proteins: 25µg per lane.
 Blocking buffer: 3% nonfat dry milk in TBST.
 Detection: ECL Basic Kit (RM00020).
 Exposure time: 1s.



Western blot analysis of lysates from Mouse stomach



Confocal immunofluorescence analysis of HeLa cells using Cytokeratin 17 (KRT17) Rabbit pAb ([TA377909]) at dilution of 1:200. Blue: DAPI for nuclear staining.



Immunofluorescence analysis of HeLa cells using Cytokeratin 17 (KRT17) Rabbit pAb ([TA377909]) at dilution of 1:200 (40x lens). Secondary antibody: Cy3-conjugated Goat anti-Rabbit IgG (H+L) (AS007) at 1:500 dilution. Blue: DAPI for nuclear staining.