

Product datasheet for **TA377906**

Cytokeratin 14 (KRT14) Rabbit Polyclonal Antibody

Product data:

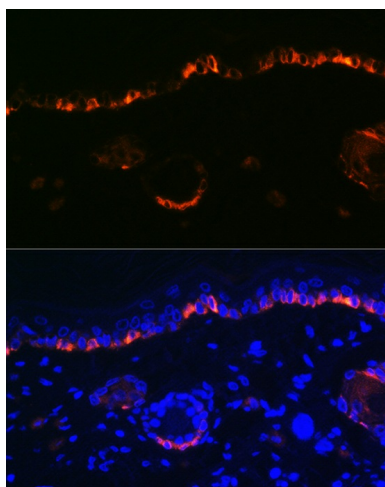
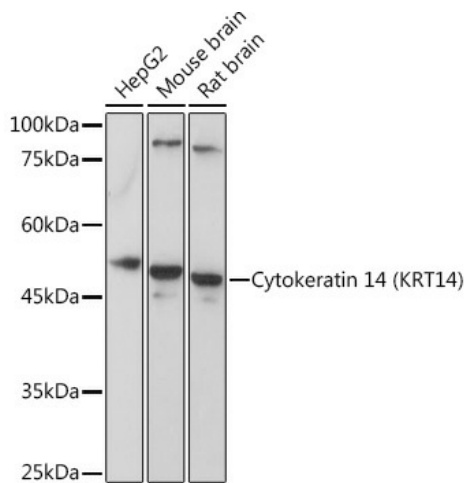
Product Type:	Primary Antibodies
Applications:	ICC/IF, IHC, WB
Recommended Dilution:	WB,1:500 - 1:2000 IHC,1:50 - 1:100 IF,1:50 - 1:100
Reactivity:	Human, Mouse, Rat
Modifications:	Unmodified
Host:	Rabbit
Isotype:	IgG
Clonality:	Polyclonal
Immunogen:	A synthetic peptide corresponding to a sequence within amino acids 400 to the C-terminus of human Cytokeratin 14 (Cytokeratin 14 (KRT14)) (NP_000517.2).
Formulation:	Buffer: PBS with 0.02% sodium azide,50% glycerol,pH7.3.
Concentration:	lot specific
Purification:	Affinity purification
Conjugation:	Unconjugated
Storage:	Store at -20°C. Avoid freeze / thaw cycles.
Stability:	Shelf life: one year from despatch.
Predicted Protein Size:	51kDa
Gene Name:	keratin 14
Database Link:	Entrez Gene 3861 Human P02533
Background:	This gene encodes a member of the keratin family, the most diverse group of intermediate filaments. This gene product, a type I keratin, is usually found as a heterotetramer with two keratin 5 molecules, a type II keratin. Together they form the cytoskeleton of epithelial cells. Mutations in the genes for these keratins are associated with epidermolysis bullosa simplex. At least one pseudogene has been identified at 17p12-p11.

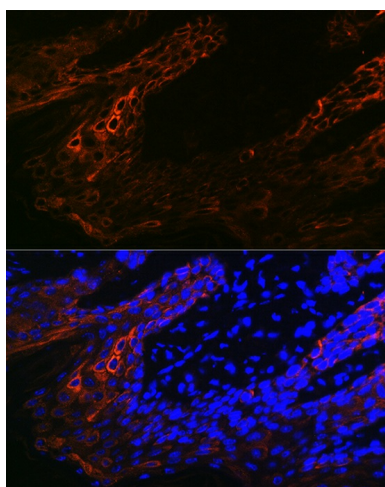


[View online »](#)

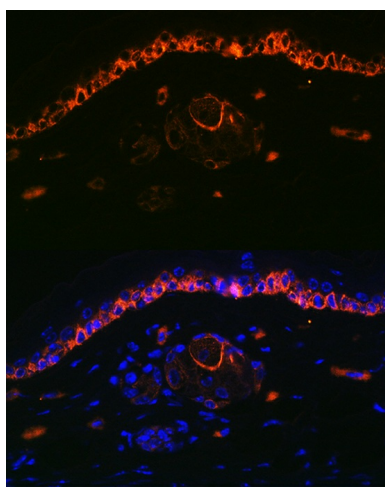
Synonyms: CK-14; CK14; Cytokeratin-14; EBS3; EBS4; K14; Keratin-14; NFJ

Product images:





Immunofluorescence analysis of Human skin cells using Cytokeratin 14 (Cytokeratin 14 (KRT14)) antibody (TA377906) at dilution of 1:100. Blue: DAPI for nuclear staining.



Immunofluorescence analysis of Mouse skin cells using Cytokeratin 14 (Cytokeratin 14 (KRT14)) antibody (TA377906) at dilution of 1:100. Blue: DAPI for nuclear staining.