

## Product datasheet for **TA377903**

### Keratin 12 (KRT12) Rabbit Polyclonal Antibody

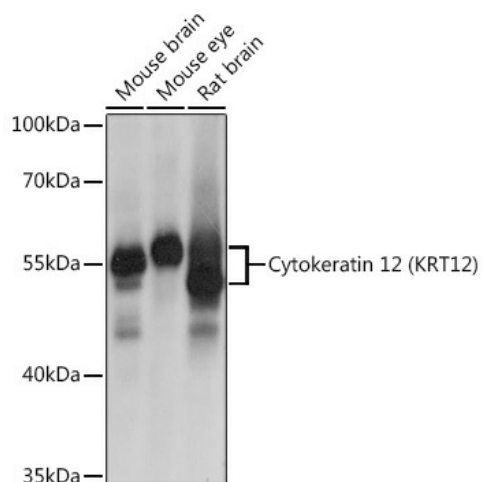
#### Product data:

Product Type:	Primary Antibodies
Applications:	WB
Recommended Dilution:	WB,1:500 - 1:1000 IHC,1:20 - 1:50 FC,1:20 - 1:50
Reactivity:	Human, Mouse, Rat
Modifications:	Unmodified
Host:	Rabbit
Isotype:	IgG
Clonality:	Polyclonal
Immunogen:	Recombinant fusion protein containing a sequence corresponding to amino acids 295-494 of human Cytokeratin 12 (Cytokeratin 12 (KRT12)) (NP_000214.1).
Formulation:	Buffer: PBS with 0.02% sodium azide,50% glycerol,pH7.3.
Concentration:	lot specific
Purification:	Affinity purification
Conjugation:	Unconjugated
Storage:	Store at -20°C. Avoid freeze / thaw cycles.
Stability:	Shelf life: one year from despatch.
Predicted Protein Size:	53kDa
Gene Name:	keratin 12
Database Link:	<a href="#">Entrez Gene 3859 Human Q99456</a>
Background:	KRT12 encodes the type I intermediate filament chain keratin 12, expressed in corneal epithelia. Mutations in this gene lead to Meesmann corneal dystrophy.
Synonyms:	CK-12; Cytokeratin-12; K12; Keratin-12



[View online »](#)

## Product images:



Western blot analysis of extracts of various cell lines, using Cytokeratin 12 (Cytokeratin 12 (KRT12)) antibody (TA377903) at 1:1000 dilution. | Secondary antibody: HRP Goat Anti-Rabbit IgG (H+L) at 1:10000 dilution. | Lysates/proteins: 25ug per lane. | Blocking buffer: 3% nonfat dry milk in TBST. | Detection: ECL Basic Kit . | Exposure time: 1s.