

Product datasheet for **TA377881S**

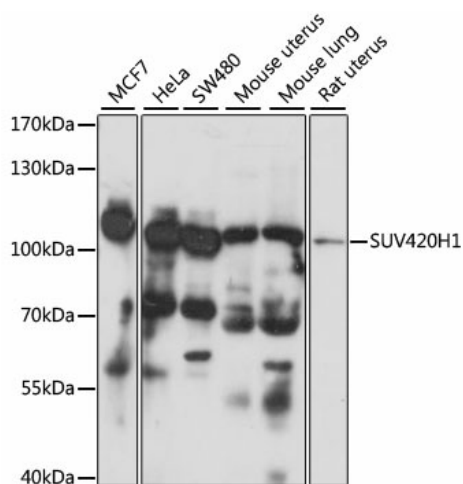
SUV420h1 (KMT5B) Rabbit Polyclonal Antibody

Product data:

Product Type:	Primary Antibodies
Applications:	ELISA, WB
Recommended Dilution:	WB, 1:200 - 1:2000 ELISA, Recommended starting concentration is 1 µg/mL. Please optimize the concentration based on your specific assay requirements.
Reactivity:	Human, Mouse, Rat
Modifications:	Unmodified
Host:	Rabbit
Isotype:	IgG
Clonality:	Polyclonal
Formulation:	Buffer: PBS with 0.02% sodium azide, 50% glycerol, pH 7.3.
Concentration:	lot specific
Purification:	Affinity purification
Conjugation:	Unconjugated
Storage:	Store at -20°C. Avoid freeze / thaw cycles.
Stability:	Shelf life: one year from despatch.
Predicted Protein Size:	99kDa
Gene Name:	lysine methyltransferase 5B
Database Link:	Entrez Gene 51111 Human Q4FZB7
Background:	This gene encodes a protein that contains a SET domain. SET domains appear to be protein-protein interaction domains that mediate interactions with a family of proteins that display similarity with dual-specificity phosphatases (dsPTPases). The function of this gene has not been determined. Several alternatively spliced transcript variants encoding different isoforms have been found for this gene.



[View online »](#)

Product images:


Western blot analysis of various lysates using SUV420H1 Rabbit pAb (TA377881) at 1:1000 dilution.

Secondary antibody: HRP-conjugated Goat anti-Rabbit IgG (H+L) (AS014) at 1:10000 dilution.

Lysates/proteins: 25µg per lane.

Blocking buffer: 3% nonfat dry milk in TBST.

Detection: ECL Basic Kit (RM00020).

Exposure time: 90s.