

## Product datasheet for **TA377864S**

### Prostate Specific Antigen (KLK3) Rabbit Polyclonal Antibody

#### Product data:

|                         |   |
|-------------------------|---|
| Product Type:           | Primary Antibodies  |
| Applications:           | ELISA, ICC/IF, IHC, IP, WB  |
| Recommended Dilution:   | WB, 1:500 - 1:1000<br>IHC-P, 1:50 - 1:200<br>IF/ICC, 1:50 - 1:200<br>IP, 0.5µg-4µg antibody for 200µg-400µg extracts of whole cells<br>ELISA, Recommended starting concentration is 1 µg/mL. Please optimize the concentration based on your specific assay requirements. |
| Reactivity:             | Human, Mouse  |
| Modifications:          | Unmodified  |
| Host:                   | Rabbit  |
| Isotype:                | IgG   |
| Clonality:              | Polyclonal  |
| Formulation:            | Buffer: PBS with 0.02% sodium azide, 50% glycerol, pH 7.3.  |
| Concentration:          | lot specific  |
| Purification:           | Affinity purification   |
| Conjugation:            | Unconjugated  |
| Storage:                | Store at -20°C. Avoid freeze / thaw cycles.   |
| Stability:              | Shelf life: one year from despatch.   |
| Predicted Protein Size: | 29kDa   |
| Gene Name:              | kallikrein related peptidase 3  |
| Database Link:          | <a href="#">Entrez Gene 354 Human P07288</a>  |



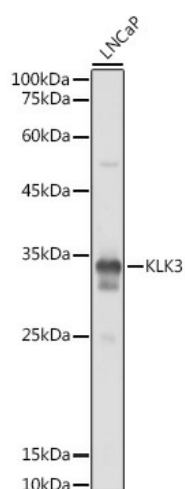
[View online »](#)

**Background:**

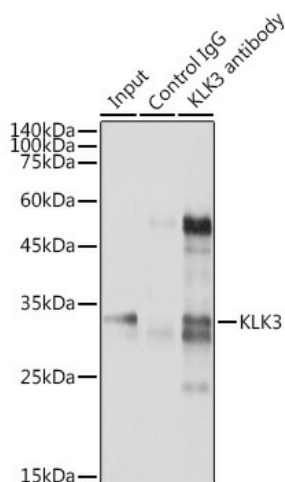
Kallikreins are a subgroup of serine proteases having diverse physiological functions. Growing evidence suggests that many kallikreins are implicated in carcinogenesis and some have potential as novel cancer and other disease biomarkers. The gene is one of the fifteen kallikrein subfamily members located in a cluster on chromosome 19. It encodes a single-chain glycoprotein, a protease which is synthesized in the epithelial cells of the prostate gland, and is present in seminal plasma. It is thought to function normally in the liquefaction of seminal coagulum, presumably by hydrolysis of the high molecular mass seminal vesicle protein. The serum level of this protein, called PSA in the clinical setting, is useful in the diagnosis and monitoring of prostatic carcinoma. Alternate splicing of this gene generates several transcript variants encoding different isoforms.

**Synonyms:**

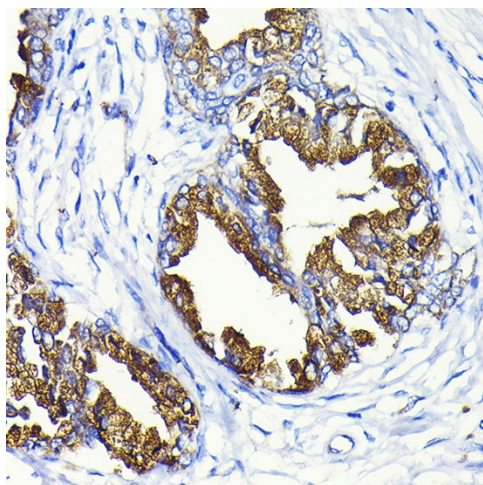
APS; gamma-seminoprotein; hK3; Kallikrein-3; KLK2A1; PSA; Semenogelase; Semin

**Product images:**


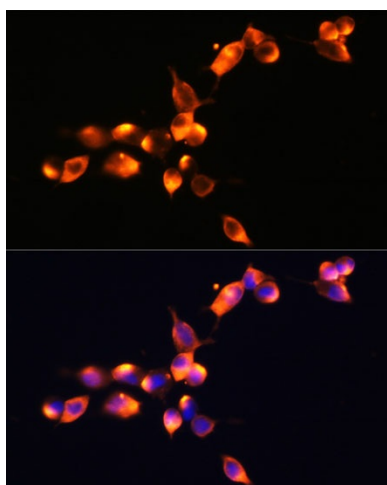
Western blot analysis of lysates from LNCaP cells



Immunoprecipitation analysis of 300 µg extracts of LNCaP cells using 3 µg KLK3 antibody ([TA377864]). Western blot was performed from the immunoprecipitate using KLK3 antibody ([TA377864]) at a dilution of 1:2000.



Immunohistochemistry analysis of paraffin-embedded Human prostate cancer using KLK3 Rabbit pAb ([TA377864]) at dilution of 1:100 (40x lens). High pressure antigen retrieval performed with 0.01M Citrate Bufferr (pH 6.0) prior to IHC staining.



Immunofluorescence analysis of LnCap cells using KLK3 Rabbit pAb ([TA377864]) at dilution of 1:100 (40x lens). Secondary antibody: Cy3-conjugated Goat anti-Rabbit IgG (H+L) (AS007) at 1:500 dilution. Blue: DAPI for nuclear staining.