

Product datasheet for **TA377853S**

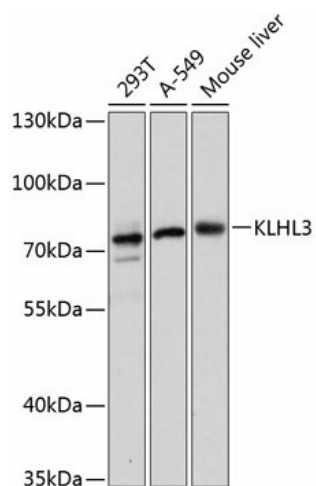
KLHL3 Rabbit Polyclonal Antibody

Product data:

Product Type:	Primary Antibodies
Applications:	ELISA, WB
Recommended Dilution:	WB, 1:500 - 1:2000 ELISA, Recommended starting concentration is 1 µg/mL. Please optimize the concentration based on your specific assay requirements.
Reactivity:	Human, Mouse
Modifications:	Unmodified
Host:	Rabbit
Isotype:	IgG
Clonality:	Polyclonal
Formulation:	Buffer: PBS with 0.02% sodium azide, 50% glycerol, pH 7.3.
Concentration:	lot specific
Purification:	Affinity purification
Conjugation:	Unconjugated
Storage:	Store at -20°C. Avoid freeze / thaw cycles.
Stability:	Shelf life: one year from despatch.
Predicted Protein Size:	65kDa
Gene Name:	kelch like family member 3
Database Link:	Entrez Gene 26249 Human Q9UH77
Background:	This gene is ubiquitously expressed and encodes a full-length protein which has an N-terminal BTB domain followed by a BACK domain and six kelch-like repeats in the C-terminus. These kelch-like repeats promote substrate ubiquitination of bound proteins via interaction of the BTB domain with the CUL3 (cullin 3) component of a cullin-RING E3 ubiquitin ligase (CRL) complex. Mutations in this gene cause pseudohypoadosteronism type IID (PHA2D); a rare Mendelian syndrome featuring hypertension, hyperkalaemia and metabolic acidosis. Alternative splicing results in multiple transcript variants encoding distinct isoforms.
Synonyms:	FLJ40871; KIAA1129; MGC44594



[View online »](#)

Product images:


Western blot analysis of various lysates using KLHL3 Rabbit pAb (TA377853) at 1:3000 dilution. Secondary antibody: HRP-conjugated Goat anti-Rabbit IgG (H+L) (AS014) at 1:10000 dilution. Lysates/proteins: 25µg per lane. Blocking buffer: 3% nonfat dry milk in TBST. Detection: ECL Basic Kit (RM00020). Exposure time: 1s.