

## Product datasheet for **TA377846**

### KLHDC2 Rabbit Polyclonal Antibody

#### Product data:

Product Type:	Primary Antibodies
Applications:	WB
Recommended Dilution:	WB,1:500 - 1:2000
Reactivity:	Human
Modifications:	Unmodified
Host:	Rabbit
Isotype:	IgG
Clonality:	Polyclonal
Immunogen:	Recombinant fusion protein containing a sequence corresponding to amino acids 1-240 of human KLHDC2 (NP_055130.1).
Formulation:	Buffer: PBS with 0.02% sodium azide,50% glycerol,pH7.3.
Concentration:	lot specific
Purification:	Affinity purification
Conjugation:	Unconjugated
Storage:	Store at -20°C. Avoid freeze / thaw cycles.
Stability:	Shelf life: one year from despatch.
Predicted Protein Size:	28kDa/46kDa
Gene Name:	kelch domain containing 2
Database Link:	<a href="#">Entrez Gene 23588 Human Q9Y2U9</a>



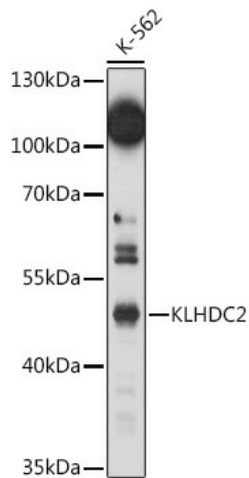
[View online »](#)

**Background:**

Substrate-recognition component of a Cul2-RING (CRL2 E3 ubiquitin-protein ligase complex of the DesCEND (destruction via C-end degrons pathway, which recognizes a C-degron located at the extreme C terminus of target proteins, leading to their ubiquitination and degradation. The C-degron recognized by the DesCEND pathway is usually a motif of less than ten residues and can be present in full-length proteins, truncated proteins or proteolytically cleaved forms. The CRL2(KLHDC2 complex specifically recognizes proteins with a diglycine (Gly-Gly at the C-terminus, leading to their ubiquitination and degradation. The CRL2(KLHDC2 complex mediates ubiquitination and degradation of truncated SELENOK and SELENOS selenoproteins produced by failed UGA/Sec decoding, which end with a diglycine. The CRL2(KLHDC2 complex also recognizes proteolytically cleaved proteins ending with Gly-Gly, such as the N-terminal fragment of USP1, leading to their degradation. May also act as an indirect repressor of CREB3-mediated transcription by interfering with CREB3-DNA-binding.

**Synonyms:**

HCA33; HCLP-1; LCP

**Product images:**

Western blot analysis of extracts of K-562 cells, using KLHDC2 antibody (TA377846) at 1:1000 dilution. | Secondary antibody: HRP Goat Anti-Rabbit IgG (H+L) at 1:10000 dilution. | Lysates/proteins: 25ug per lane. | Blocking buffer: 3% nonfat dry milk in TBST. | Detection: ECL Basic Kit . | Exposure time: 150s.