

## Product datasheet for **TA377842**

### **KLF6 Rabbit Polyclonal Antibody**

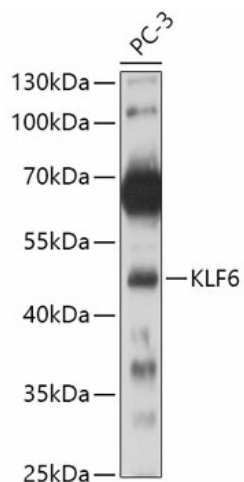
#### **Product data:**

<b>Product Type:</b>	Primary Antibodies
<b>Applications:</b>	ICC/IF, IHC, WB
<b>Recommended Dilution:</b>	WB,1:500 - 1:2000 IHC,1:50 - 1:100 IF,1:50 - 1:100
<b>Reactivity:</b>	Human, Mouse
<b>Modifications:</b>	Unmodified
<b>Host:</b>	Rabbit
<b>Isotype:</b>	IgG
<b>Clonality:</b>	Polyclonal
<b>Immunogen:</b>	Recombinant fusion protein containing a sequence corresponding to amino acids 40-200 of human KLF6 (NP_001291.3).
<b>Formulation:</b>	Buffer: PBS with 0.02% sodium azide,50% glycerol,pH7.3.
<b>Concentration:</b>	lot specific
<b>Purification:</b>	Affinity purification
<b>Conjugation:</b>	Unconjugated
<b>Storage:</b>	Store at -20°C. Avoid freeze / thaw cycles.
<b>Stability:</b>	Shelf life: one year from despatch.
<b>Predicted Protein Size:</b>	26kDa/30kDa/31kDa
<b>Gene Name:</b>	Kruppel-like factor 6
<b>Database Link:</b>	<a href="#">Entrez Gene 1316 Human Q99612</a>
<b>Background:</b>	This gene encodes a member of the Kruppel-like family of transcription factors. The zinc finger protein is a transcriptional activator, and functions as a tumor suppressor. Multiple transcript variants encoding different isoforms have been found for this gene, some of which are implicated in carcinogenesis.
<b>Synonyms:</b>	BCD1; CBA1; COPEB; CPBP; DKFZp686N0199; GBF; PAC1; ST12; ZF9

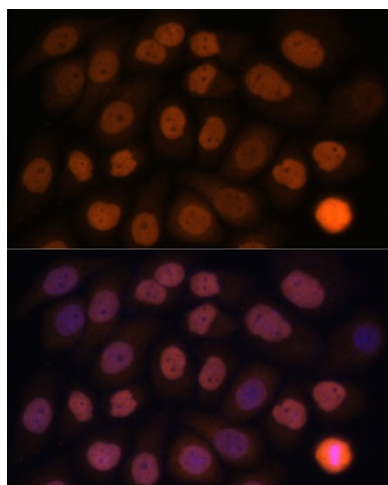


[View online »](#)

## Product images:



Western blot analysis of extracts of PC-3 cells, using KLF6 antibody (TA377842) at 1:500 dilution. | Secondary antibody: HRP Goat Anti-Rabbit IgG (H+L) at 1:10000 dilution. | Lysates/proteins: 25ug per lane. | Blocking buffer: 3% nonfat dry milk in TBST. | Detection: ECL Basic Kit. | Exposure time: 60s.



Immunofluorescence analysis of HeLa cells using KLF6 antibody (TA377842) at dilution of 1:100. Blue: DAPI for nuclear staining.