

Product datasheet for **TA377840**

KLF3 Rabbit Polyclonal Antibody

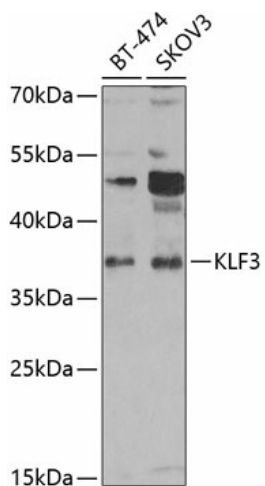
Product data:

Product Type:	Primary Antibodies
Applications:	ICC/IF, WB
Recommended Dilution:	WB,1:500 - 1:2000 IF,1:50 - 1:100
Reactivity:	Human
Modifications:	Unmodified
Host:	Rabbit
Isotype:	IgG
Clonality:	Polyclonal
Immunogen:	Recombinant fusion protein containing a sequence corresponding to amino acids 1-240 of human KLF3 (NP_057615.3).
Formulation:	Buffer: PBS with 0.02% sodium azide,50% glycerol,pH7.3.
Concentration:	lot specific
Purification:	Affinity purification
Conjugation:	Unconjugated
Storage:	Store at -20°C. Avoid freeze / thaw cycles.
Stability:	Shelf life: one year from despatch.
Predicted Protein Size:	25kDa/38kDa
Gene Name:	Kruppel-like factor 3 (basic)
Database Link:	Entrez Gene 51274 Human P57682
Background:	Binds to the CACCC box of erythroid cell-expressed genes. May play a role in hematopoiesis (By similarity).
Synonyms:	BKLF; MGC48279; TEF-2

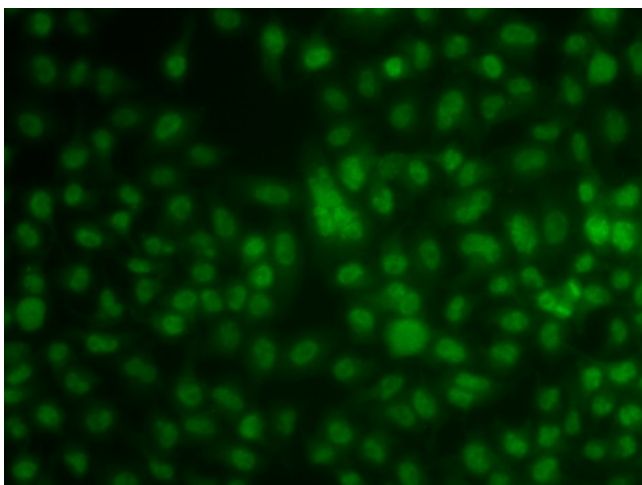


[View online »](#)

Product images:



Western blot analysis of extracts of various cell lines, using KLF3 antibody (TA377840) at 1:1000 dilution. Secondary antibody: HRP Goat Anti-Rabbit IgG (H+L) at 1:10000 dilution. Lysates/proteins: 25ug per lane. Blocking buffer: 3% nonfat dry milk in TBST. Detection: ECL Enhanced Kit. Exposure time: 60s.



Immunofluorescence analysis of A549 cells using KLF3 antibody (TA377840).