

## Product datasheet for **TA377838**

### **KLF17 Rabbit Polyclonal Antibody**

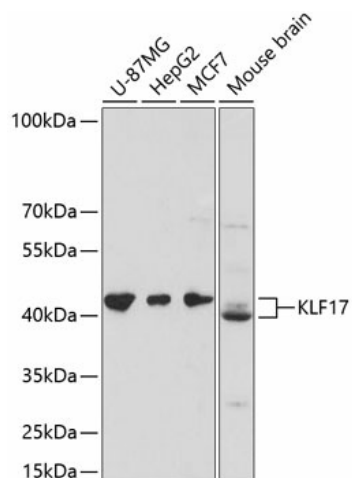
#### **Product data:**

<b>Product Type:</b>	Primary Antibodies
<b>Applications:</b>	WB
<b>Recommended Dilution:</b>	WB,1:500 - 1:2000
<b>Reactivity:</b>	Human, Mouse
<b>Modifications:</b>	Unmodified
<b>Host:</b>	Rabbit
<b>Isotype:</b>	IgG
<b>Clonality:</b>	Polyclonal
<b>Immunogen:</b>	Recombinant fusion protein containing a sequence corresponding to amino acids 210-389 of human KLF17 (NP_775755.3).
<b>Formulation:</b>	Buffer: PBS with 0.02% sodium azide,50% glycerol,pH7.3.
<b>Concentration:</b>	lot specific
<b>Purification:</b>	Affinity purification
<b>Conjugation:</b>	Unconjugated
<b>Storage:</b>	Store at -20°C. Avoid freeze / thaw cycles.
<b>Stability:</b>	Shelf life: one year from despatch.
<b>Predicted Protein Size:</b>	42kDa
<b>Gene Name:</b>	Kruppel-like factor 17
<b>Database Link:</b>	<a href="#">Entrez Gene 128209 Human Q5JT82</a>
<b>Background:</b>	Transcription repressor that binds to the promoter of target genes and prevents their expression. Acts as a negative regulator of epithelial-mesenchymal transition and metastasis in breast cancer. Specifically binds the 5'-CACCC-3' sequence in the promoter of ID1, a key metastasis regulator in breast cancer, and repress its expression. May be a germ cell-specific transcription factor that plays important roles in spermatid differentiation and oocyte development (By similarity).
<b>Synonyms:</b>	FLJ40160; Zfp393; ZNF393



[View online »](#)

## Product images:



Western blot analysis of extracts of various cell lines, using KLF17 antibody (TA377838) at 1:3000 dilution. | Secondary antibody: HRP Goat Anti-Rabbit IgG (H+L) at 1:10000 dilution. | Lysates/proteins: 25ug per lane. | Blocking buffer: 3% nonfat dry milk in TBST. | Detection: ECL Basic Kit. | Exposure time: 30s.