

Product datasheet for **TA377836S**

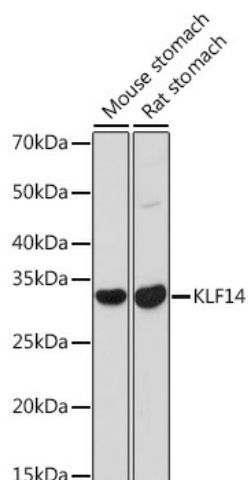
KLF14 Rabbit Polyclonal Antibody

Product data:

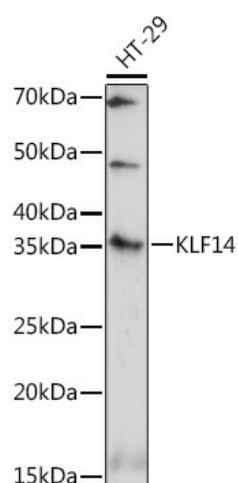
Product Type:	Primary Antibodies
Applications:	ELISA, WB
Recommended Dilution:	WB, 1:500 - 1:2000 ELISA, Recommended starting concentration is 1 µg/mL. Please optimize the concentration based on your specific assay requirements.
Reactivity:	Human, Mouse, Rat
Host:	Rabbit
Isotype:	IgG
Clonality:	Polyclonal
Formulation:	Buffer: PBS with 0.02% sodium azide, 50% glycerol, pH 7.3.
Concentration:	lot specific
Purification:	Affinity purification
Conjugation:	Unconjugated
Storage:	Store at -20°C. Avoid freeze / thaw cycles.
Stability:	Shelf life: one year from despatch.
Predicted Protein Size:	33kDa
Gene Name:	Kruppel-like factor 14
Database Link:	Entrez Gene 136259 Human Q8TD94
Background:	This intronless gene encodes a member of the Kruppel-like family of transcription factors. The encoded protein functions as a transcriptional co-repressor, and is induced by transforming growth factor-beta (TGF-beta) to repress TGF-beta receptor II gene expression. This gene exhibits imprinted expression from the maternal allele in embryonic and extra-embryonic tissues.
Synonyms:	BTEB5


[View online »](#)

Product images:



Western blot analysis of various lysates using KLF14 Rabbit pAb ([TA377836]) at 1:1000 dilution. Secondary antibody: HRP-conjugated Goat anti-Rabbit IgG (H+L) (AS014) at 1:10000 dilution. Lysates/proteins: 25µg per lane. Blocking buffer: 3% nonfat dry milk in TBST. Detection: ECL Basic Kit (RM00020). Exposure time: 90s.



Western blot analysis of lysates from HT-29 cells